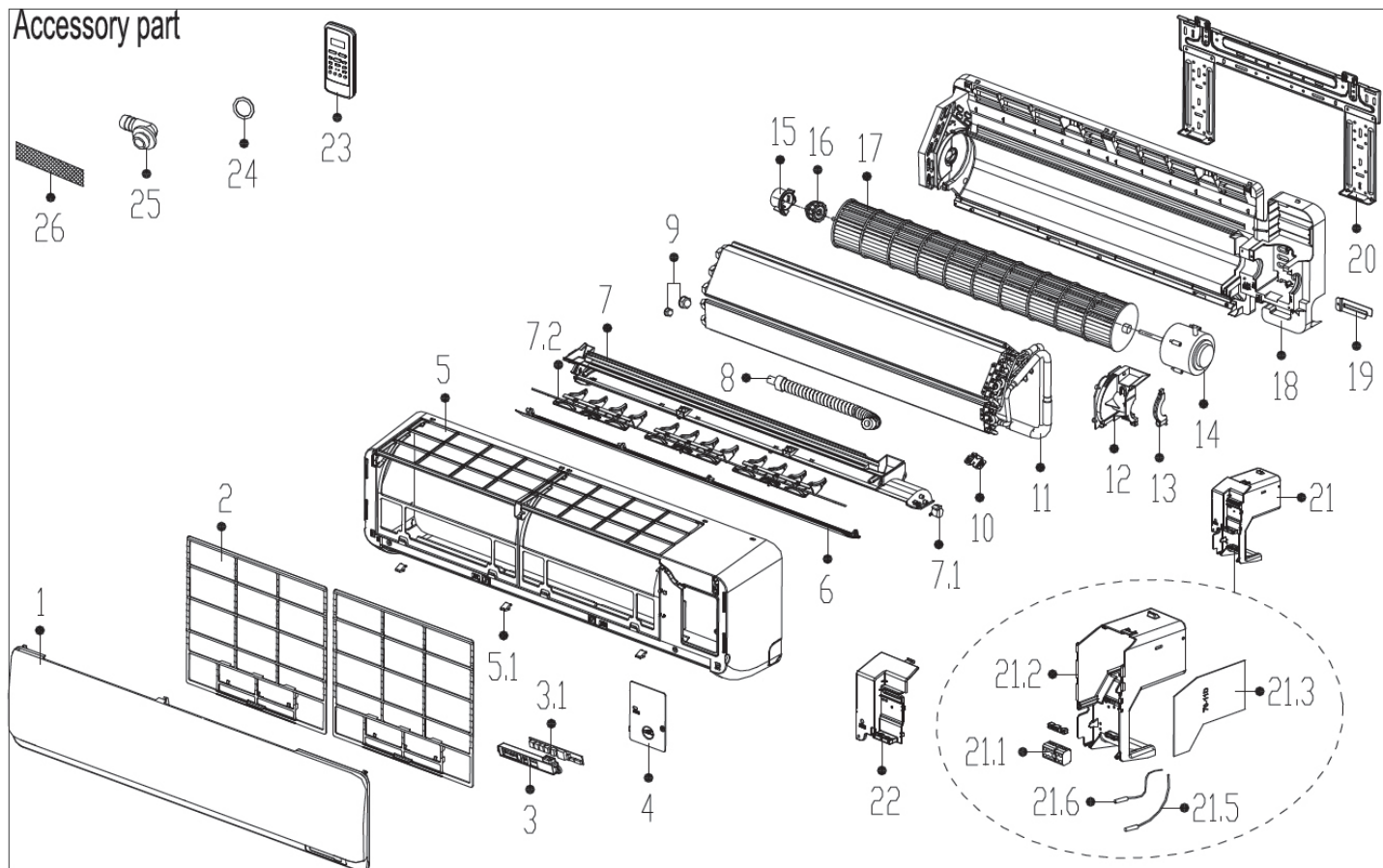


12.000Btu/h

Accessory part



No	CODE	DESCRIPTION	PIECES
1	12122000A36845	Panel assembly	1
1	12122000A36845	Panel assembly	1
2	12100204000619	Air filter	2
2	12100204000619	Air filter	2
3	17222000A00767	Display box subassembly	1
3	17222000A00767	Display box subassembly	1
3	17222000A00833	Indicator board assembly of Split Unit	1
3	17222000A00833	Indicator board assembly of Split Unit	1
3.1	17122000006991	Display board subassembly	1
3.1	17122000006991	Display board subassembly	1
3.1	17122000A02008	Display board subassembly	1
3.1	17122000A02008	Display board subassembly	1
4	12122000006693	Cover of electrical equipment	1
4	12122000006693	Cover of electrical equipment	1
5	12122000001746	Panel frame assembly	1
5	12122000001746	Panel frame assembly	1
5.1	12122000006272	Screw cap	3
5.1	12122000006272	Screw cap	3
6	12122000005707	Horizontal louver	1
6	12122000005707	Horizontal louver	1
7	12122000A03276	Air outlet assembly	1
7	12122000A03276	Air outlet assembly	1
7.1	11002010000015	stepper motor	1
7.1	11002010000015	stepper motor	1
7.1	11002010000061	stepper motor	1

No	CODE	DESCRIPTION	PIECES
7.1	11002010000061	stepper motor	1
7.2	12122000000140	Horizontal louver	3
7.2	12122000000140	Horizontal louver	3
7.2	12122000000211	Connecting rod of louver	1
7.2	12122000000211	Connecting rod of louver	1
7.2	12122000000242	Connecting rod of louver	2
7.2	12122000000242	Connecting rod of louver	2
8	12100501000021	Drain Hose	1
8	12100501000021	Drain Hose	1
9	15500406000010	Copper nut	1
9	15500406000010	Copper nut	1
9	15500406000016	Copper nut	1
9	15500406000016	Copper nut	1
11	15822000003259	Evaporator assembly	1
11	15822000003259	Evaporator assembly	1
12	12122000005516	Fan motor cover	1
12	12122000005516	Fan motor cover	1
13	12122000006772	Fixing board of fan motor	1
13	12122000006772	Fixing board of fan motor	1
14	11002015000094	Brushless DC Motor	1
14	11002015000094	Brushless DC Motor	1
15	12122000000350	Bearing holder	1
15	12122000000350	Bearing holder	1
16	12622000000006	Bearing base	1
16	12622000000006	Bearing base	1