

air conditioners • portable A/C • ionizers • dehumidifiers • refrigerators • freezers



Product Catalogue **2015**



Inventor A.G. S.A. is a dedicated company in the Air Conditioning industry with more than 50 years of experience. We are providing excellent Air Cooling Solutions for any home or business! Our exceptionally designed products meet the highest quality standards. Choose Inventor and become part of an amazing growing brand!



Products

In this catalogue you will find ECO Design products with a high energy class **A++** rating, and advanced DC 10 and All DC Inverter technology. Also, we have provided the important technical material for all of our air conditioner models along with some useful information about technologies, energy savings, and usage.

editorial

Journal of
Air
Conditioning
and
Refrigeration
Engineering

Inventor Plan 2020 Renewable Energy Sources

Inventor
Invests in
air-conditioning
solutions
with a high
SEER & SCOP



renewable
Energy Sources
Penetration

Final Gross
Energy Consumption
according to the 2009/28/EC
European Union directive



less
Primary Energy Consumption



less
CO₂
Emissions

Compared to the
1990 levels according
to the 2009/28/EC
European Union directive

Inventor Respectful Environmental Green Attitude

Energy Efficiency Standard
Our main goal is to provide high efficiency, energy saving products even during peak hours. Innovative technologies are integrated to reduce energy consumption. We strive for continuous optimization and advanced solutions.

Reduced Noise Emissions
Considering the reduction of noise emissions as a pivotal part of the solution to environmental pollution, INVENTOR is investing in a sequence of very strict tests and procedures in order to import products that are much more silent and eco-friendly than their predecessors.

ECO DESIGN
All INVENTOR air conditioners are functioning with a primary focus on energy efficiency and low energy costs while complying with all the EU guidelines and laws on environmental pollution. We offer all the necessary credentials to ensure that the users will enjoy high performance products while preserving the environment and furthermore raising their consciousness of environmental issues.

index

Residential Air Conditioners

vision WiFi • 16-17 / passion WiFi • 18-19
life • 20-21 / multi split • 22-27

{ 14
27

28
39

home appliances

dehumidifiers • 30-31 / ionizers • 32
portable air conditioners • 33
refrigerators • 34-37 / freezers • 38-39

Commercial & Light Commercial

floor standing • 42-43 / cassettes • 44-45
floor ceiling • 46-47 / ducted • 48-51

{ 40
51

Inventor WiFiReady... technology that cares

You can now control the temperature anytime anywhere



Inventor's application **INVMATE** for smartphones and tablets...



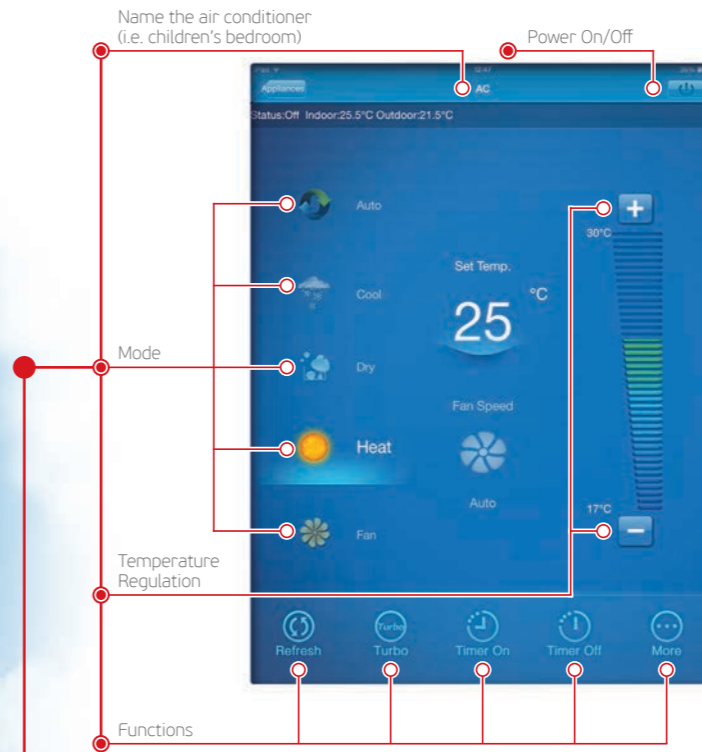
...can assist you wherever you are...

...to create anytime...



...ideal living conditions for the ones you love...

...simple easy and fast...



...with just one click!



Turn on the air conditioner in your living room



Freshen the air in your child's room



Start cooling your home before you arrive



Ideal living condition for the ones you love

Inventor provides solutions for smart houses

INVmate application

Inventor introduces the smartest way for you to control your air conditioner! Start taking control of the temperature while saving time and energy by simply opening your smartphone or tablet.



The application is available at...



What do I need to connect the WiFi?

When the installation of the air conditioning unit is complete, you will need ...



WiFi Module
Not included in the package of the unit



WiFi network
in your home



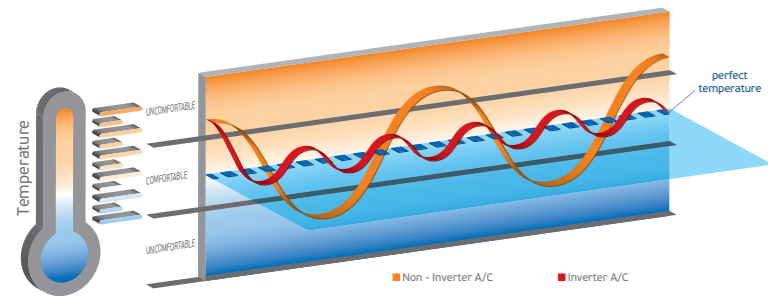
Your **smartphone** or **tablet**

Inventor Superior Technology

Energy Saving All DC Inverter

All DC Inverter technology generates the air conditioning units to operate more efficiently and economically. All DC Inverter superior technology is implemented in almost all Inventor air conditioners and can:

50% ENERGY Saving



- ✓ Achieve the ideal temperature quickly and efficiently
- ✓ Provide stable and efficient operation even in extreme weather conditions
- ✓ Save up to 60% energy in comparison to conventional air conditioners

Inventor Air conditioners are the ideal solution for the winter and summer

Outdoor Units

Outdoor units are designed to ensure a more rugged and durable operation under any circumstances



Indoor Units

Indoor units are designed using today's modern trends and they create the perfect conditions while meeting high efficiency standards



Internal Super 12 Speed Fan

Internal fan has 12 speeds that provide a more accurate temperature control while created the ideal comfortable living conditions.

Innovative 3D Air Flow

The renewed design creates uniform air distribution in all dimensions. The vent swings not only move horizontally but vertically as well, dispersing the air smoothly even in the most difficult spots.

Wide Range Voltage Operation

The wide range voltage operation, 170-265V, allows the units to run even in areas with an unstable power network without causing any fatigue to the compressor or impact on the boards.

External Fan DC INVERTER 5 speeds

Increasing speed from 2 up to 5, DC INVERTER outdoor fan offers stable cooling and heating operation even in the most extreme weather conditions.

Wide Range Efficiency in Cooling and Heating

The new 25-stage compressor increases the operating efficiency range up to 70%. The air conditioner works more smoothly and provides a constant internal temperature for an extra comfortable environment with energy savings.

Inventor Compressors

Inventor very carefully chooses the compressors implemented in the outdoor units. The main objective is to have reduced vibrations and efficient, uninterrupted operation.

Inventor Air Conditioning Solutions

Perfect Choice for Summer & Winter



Cooling

The outdoor units special design produces an efficient and effective cooling operation, even at +50°C. Inventor air conditioning units are running effectively without the use of additional aids.



Energy Class

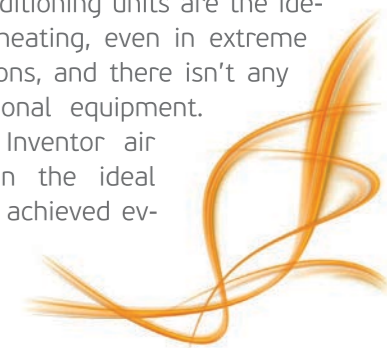
Inventor air conditioners have been classified among the highest in energy classes. Energy class indicates the level of energy savings. Achieving a higher energy rating means you achieve higher energy savings. The air conditioning units have four energy class indicators, one for the cooling operation and three for the heating operation. The three classes in the heating operation are dependent upon where you are located. The lowest energy class is D and the highest is A+++.

European Map Divided into 3 Climate Zones



Heating

Inventor air conditioning units are the ideal solution for heating, even in extreme weather conditions, and there isn't any need for additional equipment. Only by using Inventor air conditioners can the ideal temperature be achieved everywhere, even at -20°C.



Inventor innovation and technology

1 Watt standby

Less power consumption in standby mode and energy savings up to 80% per day.

Powerful self-cleaning

With a touch of a button on the remote your air conditioner cleans itself! The process only takes 17 minutes. The first 13 minutes the indoor unit runs in fan mode in order to dry the inner parts of the unit. The next 2 minutes the unit will run in heating mode to destroy bacteria and fungi. The last 2 minutes the unit returns to fan mode for a final cleaning of the inner parts. The unit then powers down and remains ready for the next use.

Heating 8°C

Prevent potential weather damages in places that are not heated and pose risks during the winter. The cold and frost can damage furniture, break pipes and cause trouble in every household. Enable the 8°C function and the air conditioner only heats the room as needed while maintaining a stable room temperature of 8°C. Start protecting your assets while enjoying low energy consumption that maximizes your energy savings throughout the winter.

Smart Display

The «°C» icon is blue when the air conditioner is in cooling mode and orange when it is in heating mode. The green «ECO» icon is activated when the unit is corresponding to the ECO function, and the «WiFi» icon will light up when the unit is connected to the wireless network.

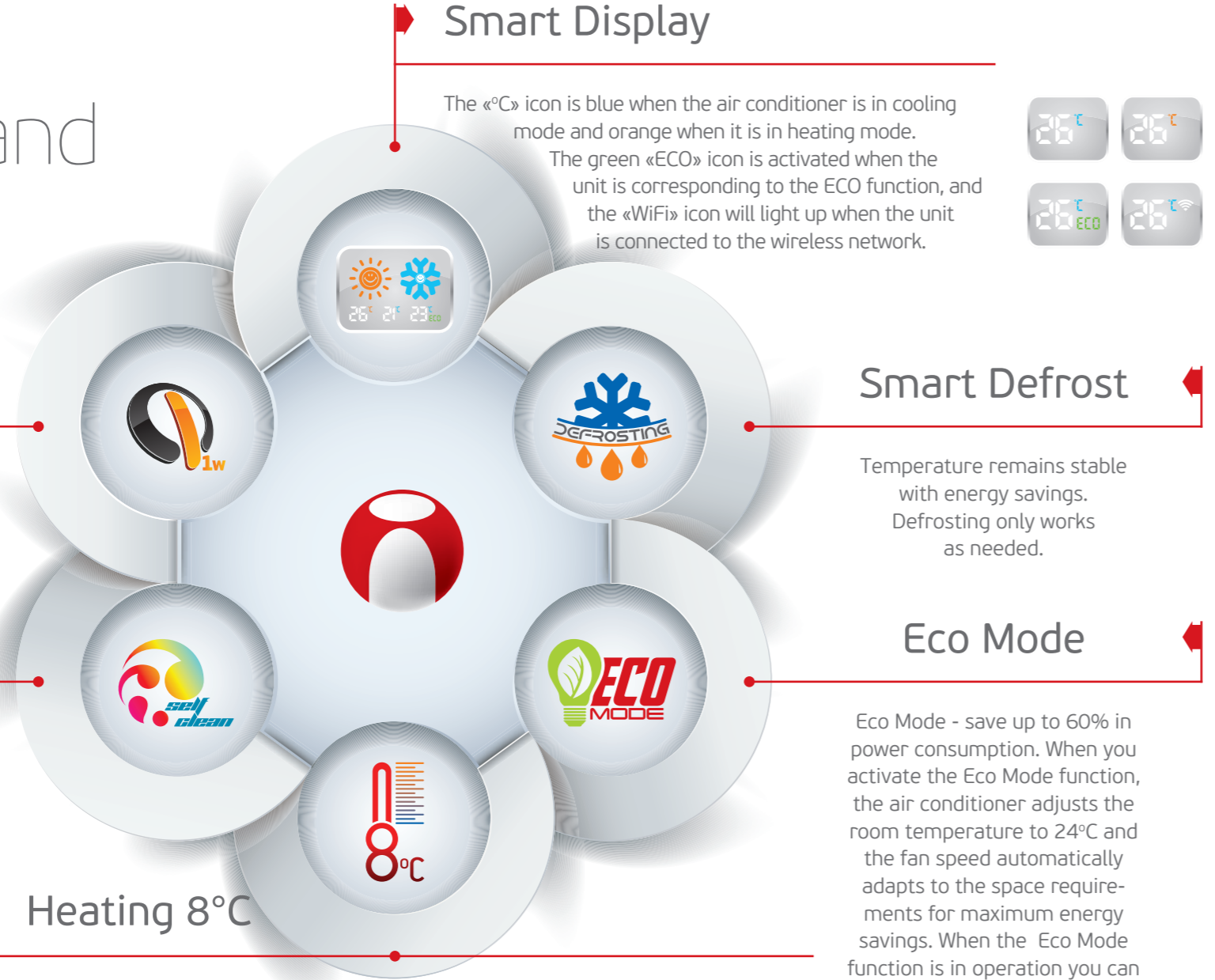


Smart Defrost

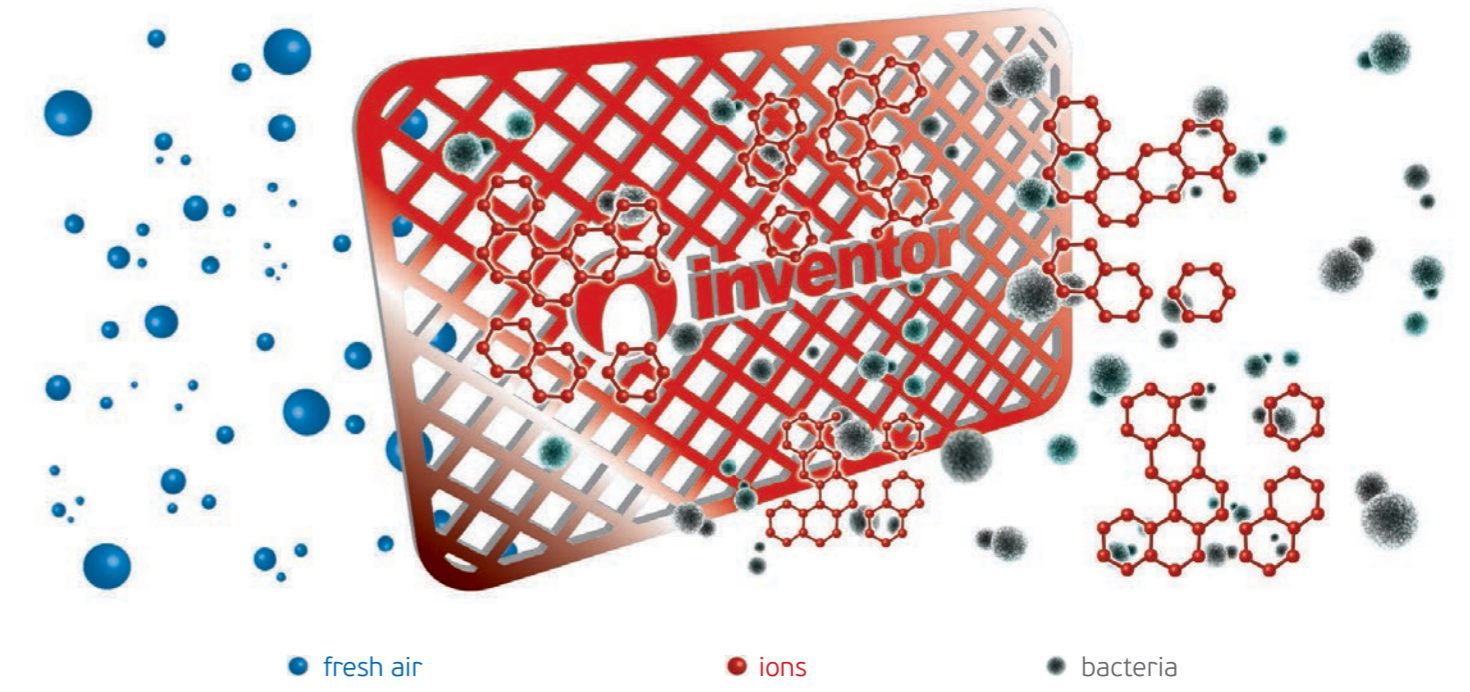
Temperature remains stable with energy savings. Defrosting only works as needed.

Eco Mode

Eco Mode - save up to 60% in power consumption. When you activate the Eco Mode function, the air conditioner adjusts the room temperature to 24°C and the fan speed automatically adapts to the space requirements for maximum energy savings. When the Eco Mode function is in operation you can adjust the room temperature between 24°C and 30°C, saving more than 60% in energy consumption.

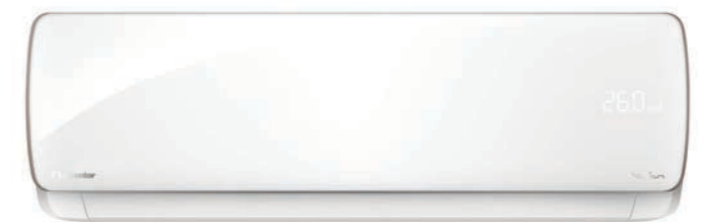


Inventor for a pure and healthy environment



iO Technology Smart Air Ionizer

Inventor provides Smart Air Ionizing Technology with our latest premium model Vision, helping to create a purified home environment through air purifying technology. A series of air filters located in the indoor unit removes airborne viruses, allergens, and even unpleasant odors. In addition to improved air quality, Vision is equipped with a Superpower Ionizer, a Vitamin C Filter, a Silver Ion Filter, and a Cold Catalyst Filter.



Vision **wifi**ready

WellMore Advanced Ionizer System

The WellMore Ionizer releases millions of ions into your room eliminating unpleasant odors, bacteria and fungi. The WellMore ionizer's innovative system not only disinfects, deodorizes, and filters the air in your room but also within the unit surrounding the harmful elements and eliminating them with eco natural compounds! Air conditioning with Ionizer Passion! Technological excellence for the ones you love the most.



Passion **wifi**ready

Btu calculator

The most advanced tool for choosing the perfect air conditioner!

Estimate your AC needs **btu calculator**

<http://www.inventorairconditioner.com/btu-calculator/>

Location

Choose your location



Location

Windows

Single or double windows



Glazing

• Single • Double

Altitude

Choose the altitude accordingly



Altitude

• Less than 400 meters • More than 400 meters

btu calculator

Surface (m²)

Precisely fill in the square meters of the space you desire the air conditioner to cover

Area type

Select whether the space is residential or commercial

Insulation

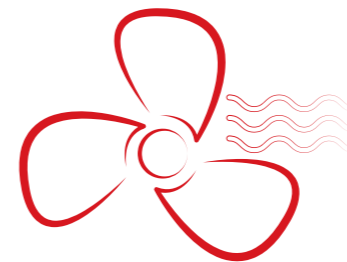
Choose whether insulation of the building is good or not



Scan and find your suitable air conditioner

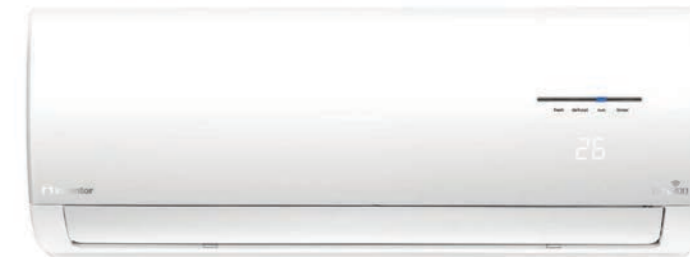
1. How to choose the most suitable air conditioner

Choosing a suitable air conditioner plays a vital role in saving energy. Choosing a smaller unit than what is required forces the air conditioner to run longer hours which results in higher power consumption. Likewise, choosing a larger unit than what is needed forces the unit to function poorly. There are not any adequate energy savings in either of these cases. A professional installer will consult options with you and suggest a suitable air conditioner. Inventor is providing an easy and useful guide through the website www.inventorairconditioner.com. By answering five simple questions, you can quickly find the perfect air conditioner that fits your conditions.



2. How to choose the right spot for the air conditioner

Does choosing the right spot to install the air conditioner give you a headache? Usually we think of the room's aesthetics without taking performance, operation, or the airflow of the air conditioner into consideration. Professional installers can recommend the ideal spot by keeping all of these aspects in mind and they will provide you with the best solution with the greatest results and highest efficiency.



3. How to choose the right temperature

Adjust the temperature of your room accordingly
When the heating mode (winter) is on, please set the temperature between 20°C - 25°C.
And when the cooling mode (summertime) is on, please set the temperature between 26°C - 29°C.



4. How to adjust the swings

Adjust the indoor unit swings correctly according to its function. When operating in the heating mode (winter), adjust the swings to direct the air as low as possible. Warm air has the tendency to rise. When operating in the cooling mode (summertime), adjust the swings to direct the air as high as possible. Cold air has the tendency to fall.



residential **air conditioning**



visionwifi

passionwifi

life

spirit

multi split
free match

V4MVI-09WFR/V4MVO-09	9.500 (2.500-12.000)	10.500 (2.500-13.500)
V4MVI-12WFR/V4MVO-12	12.000 (2.500-14.000)	13.000 (2.500-16.000)
V4MVI-18WFR/V4MVO-18	18.000 (3.000-20.500)	19.000 (3.000-21.500)
V4MVI-24WFR/V4MVO-24	24.000 (4.800-26.500)	26.000 (5.500-28.000)

Pdesign (kW)	COOLING			HEATING (Middle Zone)			HEATING (Warm Zone)				
	Energy Class (Cooling)	SEER (Energy Class)	Annual Consumption (kWh/cool)	Energy Class (Middle Zone)	SCOP (Energy Class)	Annual Consumption (kWh/heat)	Energy Class (Warm Zone)	SCOP (Energy Class)	Annual Consumption (kWh/heat)		
2.8	A++	6.5	150	2.4	A+	4.0	840	2.6	A+++	5.1	714
3.5	A++	6.4	191	2.5	A+	4.0	875	3.5	A+++	5.1	961
5.2	A++	7.4	246	4.4	A+	4.0	1.540	5.3	A+++	5.1	1.455
7.0	A++	6.1	402	5.4	A+	4.0	1.890	6.2	A++	4.8	1.808

Seasonal Efficiency (In accordance to EN14825)

R410A		V4MVI-09WFR / V4MVO-09	V4MVI-12WFR / V4MVO-12	V4MVI-18WFR / V4MVO-18	V4MVI-24WFR / V4MVO-24
Voltage / Frequency / Phase (V/Hz/Ph)		220-240 / 50 / 1	220-240 / 50 / 1	220-240 / 50 / 1	220-240 / 50 / 1
Current Input (A)	Cooling / Heating	0.6-8.2 / 0.7-6.5	0.6-7.2 / 0.7-7.7	0.6-10.6 / 1-10.3	1.1-13.7 / 1.6-13.4
Power Input (W)	Cooling / Heating	130-1.355 / 150-1.415	130-1.580 / 160-1.675	130-2.310 / 210-2.250	230-2.990 / 340-2.930
Air Flow Volume (High/Med/Low) (m³/h)		490/430/310	500/440/320	710/610/510	1.060/860/670
Noise Level (dB(A))	Indoor unit (High/Med/Low)	21 / 24 / 31 / 39	21 / 24 / 31 / 39	23 / 34 / 39 / 44	24 / 32 / 40 / 48
	Outdoor unit	55	55	58.5	60
Sound Power Level (dB(A))	Indoor unit / Outdoor unit	55 / 64	52 / 61.2	60 / 65	63 / 70
Compressor Type		ROTARY	ROTARY	ROTARY	ROTARY
Liquid line / Gas line		1/4" / 3/8"	1/4" / 3/8"	1/4" / 1/2"	3/8" / 5/8"
Power Supply Wire Outdoor (Noxmm²) / Fuses (A)		3x1.5 / 10	3x1.5 / 10	3x2.5 / 16	3x2.5 / 16
Signal Wires (Noxmm²)		5x1.5	5x1.5	5x1.5	5x1.5
Dimensions WxDxH (mm)	Indoor unit	770x200x294	850x204x302	1.010x230x326	1.130x240x340
	Outdoor unit	810x310x558	810x310x558	810x310x558	845x320x700
Net Weight (kg)		7.2 / 30	8.5 / 30.5	11.4 / 36	13.7 / 49.8
Refrigerant		R410A / 850g	R410A / 1.030g	R410A / 1.650g	R410A / 1.950g
Operation Temperature Range (°C)	Cooling / Heating	-15°C ~ 50°C / -20°C ~ 30°C	-15°C ~ 50°C / -20°C ~ 30°C	-15°C ~ 50°C / -20°C ~ 30°C	-15°C ~ 50°C / -20°C ~ 30°C

SPECIFICATIONS



V4MVI

A++ Energy Class

Smart Air Conditioner WiFi Ready

60% Energy Savings

All DC Inverter Technology

Innovative 3D Air Distribution

Smart Air Ionizing Technology

CL - Air Filter Reminding Function

iFeel Function

Filter Sterilization Against Allergies

Quiet Operation

Smart Display

visionwifiready

Vision! Cutting edge technology for a clean and hygienic environment! Equipped with innovative technology, ionized air, low noise level, high efficiency and Eco MODE function. Excellence and high performance superiority!

A++ Energy class*
The higher and more efficient performance rating maximizes your energy savings.

Smart WiFi Ready Unit
Refer to pages 6-7 of this catalogue.

ECO mode - 60% Energy Saving
Refer to page 10 of this catalogue.

Innovative 3D air distribution
The renewed design creates uniform air distribution in all dimensions. The vent swings not only move horizontally but vertically as well dispersing the air smoothly even in the most difficult spots.

iFeel function
A smart sensor is located on the remote control. When the iFeel function is activated the set temperature synchronizes with the smart sensor. Your set temperature will follow you wherever you and the remote go offering extra comfort and energy savings.

Smart Air Ionizing Technology
Refer to page 10 of this catalogue.

CL - Air Filter Reminding Function

Smart Display
Refer to page 10 of this catalogue.

*Energy classification refers to the cooling mode

Smart Air Ionizer Technology

Superpower Ionizer
The Superpower Ionizer produces positive and negative ions. When these ions collide they release an enormous energy which destroys odors, dust and smoke while leaving your environment clean and fresh.

Filter sterilization against allergies
Removes even the smallest dust particles from the air. Also removes allergy and viral disease causing microbes, filling your room with healthy pure air.

Vitamin C Filter
It increases collagen production. The filtered air softens the skin and reduces stress.

Silver Ion filter
The Silver Ions eliminate the existing bacteria and microbes in the air. It provides fresh odorless air, helping to prevent mold.

Cold Catalyst Filter
It absorbs odors and harmful gases from the environment while successfully eliminating formaldehyde and volatile organic compounds (VOCs).



P4MVI-09WFR / P4MVO-09

9.000
(4.390-11.250) **10.000**
(3.300-12.700)

P4MVI-12WFR / P4MVO-12

12.000
(4.870-15.240) **13.000**
(3.380-16.640)

P4MVI-18WFR / P4MVO-18

17.500
(5.800-20.300) **18.000**
(3.820-21.780)

P4MVI-24WFR / P4MVO-24

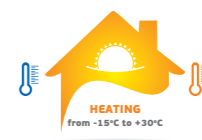
24.000
(9.650-26.900) **26.000**
(7.100-31.200)

COOLING				HEATING (Middle Zone)				HEATING (Warm Zone)			
Passign (kW)	Energy Class (Cooling)	SEER (Energy Class)	Annual Consumption (kWh/cool)	Passign (kW)	Energy Class (Middle Zone)	SCOP (Energy Class)	Annual Consumption (kWh/heat)	Passign (kW)	Energy Class (Warm Zone)	SCOP (Energy Class)	Annual Consumption (kWh/heat)
2.6	A++	6.1	149	2.4	A+	4.0	840	2.8	A+++	5.1	769
3.5	A++	6.7	182	3.2	A+	4.0	1.120	3.8	A+++	5.1	1.043
5.1	A++	6.4	278	4.5	A+	4.0	1.575	5.2	A+++	5.1	1.427
7.0	A++	6.6	371	5.3	A+	4.0	1.855	6.3	A+++	5.1	1.729

Seasonal Efficiency (In accordance to EN14825)

R410A CE E69001 E61000 RoHS COMPLIANT		P4MVI-09WFR / P4MVO-09	P4MVI-12WFR / P4MVO-12	P4MVI-18WFR / P4MVO-18	P4MVI-24WFR / P4MVO-24
Voltage / Frequency / Phase (V/Hz/Ph)		220-240 / 50 / 1	220-240 / 50 / 1	220-240 / 50 / 1	220-240 / 50 / 1
Current Input (A)	Cooling / Heating	0.49-5.52 / 0.64-5.78	0.45-7.47 / 0.7-7.57	0.62-9.95 / 0.78-9.91	0.9-13.9 / 1.5-14.9
Power Input (W)	Cooling / Heating	112-1.270 / 147-1.330	104-1.720 / 162-1.740	142-2.290 / 179-2.280	200-3.050 / 320-3.300
Air Flow Volume (High/Med/Low) (m³/h)		650/560/450	650/560/450	850/620/540	1.150/1.070/880
Noise Level (dB(A))	Indoor unit (High/Med/Low)	26 / 33 / 40	28 / 35 / 42	27 / 35 / 43	35 / 41 / 48
	Outdoor unit	57	56	61	60
Sound Power Level (dB(A))	Indoor unit / Outdoor unit	54 / 60	55 / 61	57 / 65	63 / 67
Compressor Type		ROTARY	ROTARY	ROTARY	ROTARY
Liquid line / Gas line		1/4" / 3/8"	1/4" / 3/8"	1/4" / 1/2"	3/8" / 5/8"
Power Supply Wire Outdoor (Noxmm²) / Fuses (A)		3x1.5 / 10	3x1.5 / 10	3x2.5 / 16	3x2.5 / 16
Signal Wires (Noxmm²)		5x1.5	5x1.5	5x1.5	5x1.5
Dimensions WxDxH (mm)	Indoor unit	800x188x275	800x188x275	940x205x275	1.045x235x315
	Outdoor unit	780x250x540	810x310x558	810x310x558	845x320x700
Net Weight (kg)	Indoor unit / Outdoor unit	7.3 / 27.4	7.3 / 30.5	9 / 36.5	12 / 50
Refrigerant		R410A / 950g	R410A / 1.080g	R410A / 1.650g	R410A / 1.950g
Operation Temperature Range (°C)	Cooling / Heating	-15°C ~ 50°C / -15°C ~ 30°C	-15°C ~ 50°C / -15°C ~ 30°C	-15°C ~ 50°C / -15°C ~ 30°C	-15°C ~ 50°C / -15°C ~ 30°C

SPECIFICATIONS



P4MVI-WFR



passionwifiready

Technologically sophisticated air conditioners that meet modern needs. The application INVmate evolves the air conditioner's functions further. Now you can easily and quickly check the temperature wherever you are on your mobile phone or tablet! It has never been easier to cool your house so quickly!

A++ Energy class*
The higher and more efficient performance rating maximizes your energy savings.

Smart WiFi Ready Unit
Refer to pages 6-7 of this catalogue.

iFeel function
A smart sensor is located on the remote control. When the iFeel function is activated the set temperature synchronizes with the smart sensor. Your set temperature will follow you wherever you and the remote go offering extra comfort and energy savings.

*Energy classification refers to the cooling mode

WellMore Air Ionizer

- Air Ionizer**
Generates negative ions that disinfect and sterilize the air while creating a healthy, secure, and tranquil environment
- Sterilization HEPA filter**
Removes even the smallest dust particles from the air. Also removes allergy and viral disease causing microbes, filling your room with healthy pure air.
- Vitamin C Filter**
It increases collagen production. The filtered air softens the skin and reduces stress.
- Silver Ion filter**
The Silver Ions eliminate the existing bacteria and microbes in the air. It provides fresh odorless air, helping to prevent mold.
- Cold Catalyst Filter**
It absorbs odors and harmful gases from the environment while successfully eliminating formaldehyde and volatile organic compounds (VOCs).



L2VI-09 / L2V0-09

8.530
(2.047-9.554)

9.554
(2.047-10.918)

L2VI-12 / L2V0-12

10.918
(2.047-12.965)

11.601
(2.047-12.966)

L2VI-18 / L2V0-18

17.504
(4.299-22.519)

17.998
(3.821-23.202)

L2VI-24 / L2V0-24

22.860
(6.824-27.978)

24.737
(6.824-29.002)

COOLING				HEATING (Middle Zone)				HEATING (Warm Zone)			
Power Sign (kW)	Energy Class (Cooling)	SEER (Energy Class)	Annual Consumption (kWh/cool)	Power Sign (kW)	Energy Class (Middle Zone)	SCOP (Energy Class)	Annual Consumption (kWh/heat)	Power Sign (kW)	Energy Class (Warm Zone)	SCOP (Energy Class)	Annual Consumption (kWh/heat)
2.5	A++	6.1	143	2.5	A+	4.0	875	2.5	A+++	5.1	686
3.2	A++	6.1	184	3.2	A+	4.0	1.120	3.2	A+++	5.1	878
5.1	A++	6.1	293	4.1	A+	4.0	1.435	5.3	A+++	5.4	1.374
6.7	A++	6.3	373	6.4	A+	4.0	2.240	7.1	A+++	5.1	1.949

Seasonal Efficiency (In accordance to EN14825)

R410A		L2VI-09 / L2V0-09		L2VI-12 / L2V0-12		L2VI-18 / L2V0-18		L2VI-24 / L2V0-24	
Voltage / Frequency / Phase (V/Hz/Ph)		220-240 / 50 / 1		220-240 / 50 / 1		220-240 / 50 / 1		220-240 / 50 / 1	
Current Input (A)	Cooling / Heating	3.60 / 3.50		4.50 / 4.4		7.0 / 6.3		8.32 / 8.63	
Power Input (W)	Cooling / Heating	120-1.300 / 120-1.400		120-1.400 / 120-1.500		380-2.450 / 350-2.600		400-3.700 / 450-3.800	
Air Flow Volume (High/Med/Low) (m³/h)		480/370/320/210		560/480/410/290		800/720/610/520		1.150/1.050/950/850	
Noise Level (dB(A))	Indoor unit (High/Med/Low)	29 / 34 / 36 / 40		29 / 35 / 37 / 42		36 / 39 / 42 / 46		39 / 42 / 45 / 48	
	Outdoor unit	51		52		56		60	
Sound Power Level (dB(A))	Indoor unit / Outdoor unit	50 / 60		55 / 61		58 / 63		64 / 68	
Compressor Type		Rotary		Swing		Rotary		Rotary	
Liquid line / Gas line		1/4" / 3/8"		1/4" / 3/8"		1/4" / 1/2"		1/4" / 5/8"	
Power Supply Wire Outdoor (Noxmm²) / Fuses (A)		3x1.5 / 10		3x1.5 / 10		3x2.5 / 16		3x2.5 / 16	
Signal Wires (Noxmm²)		4x1.5		4x1.5		4x1.5		4x1.5	
Dimensions WxDxH (mm)	Indoor unit	790x200x275		790x200x275		970x224x300		1.078x246x325	
	Outdoor unit	776x320x540		842x320x596		955x396x700		955x396x700	
Net Weight (kg)	Indoor unit / Outdoor unit	9 / 26.5		9 / 31		13.5 / 45		17 / 53	
Refrigerant		R410A / 700g		R410A / 850g		R410A / 1.300g		R410A / 1.900g	
Operation Temperature Range (°C)	Cooling / Heating	-15°C ~ 48°C / -15°C ~ 24°C		-15°C ~ 48°C / -15°C ~ 24°C		-15°C ~ 43°C / -15°C ~ 24°C		-15°C ~ 43°C / -15°C ~ 24°C	

SPECIFICATIONS



L2VI



life

High efficiency and less energy consumption to ensure ideal conditions, this is what Life offers. Life is ecologically adapted to adjust to the modern needs of your life. You can now enjoy every moment at your home in perfect conditions!

A++ Energy class*
The higher and more efficient performance rating maximizes your energy savings.

Sleep Function
Sleep mode saves energy by gradually increasing (summer) or decreasing (winter) the indoor temperature, to match your body's temperature helping you sleep comfortably.

Auto mode
It sets the unit to heating, cooling, or drying mode offering the ideal room temperature making things easy for you.

Blow/X-fan Function
It eliminates unwanted moisture in the indoor unit during cooling mode operation. After turning off the air conditioner, the indoor unit's fan will keep running for a while in order to dry the indoor unit.

Perfect Start Mode
The perfect start mode technology evaluates the existing room conditions and achieves the ideal starting temperature, regardless of the current environmental conditions. Helps to create a pleasant environment with great energy savings, without any inconvenience.

Hot Start Operation
The indoor coil sensor controls the indoor fan and prevents cold air from entering the room during start up in heating mode.

Auto Restart
Saves the last settings in case of power failure.

Electric Expansion Valve (L2VI-24/L2V0-24)

*Energy classification refers to the cooling mode

	Cooling Capacity (Btu/h)		COOLING			HEATING (Middle Zone)			Cooling Capacity (Btu/h)		Heating Capacity (Btu/h)	
	18.000	21.000	Power Design (kW)	Energy Class (Cooling)	SEER (Energy Class)	Power Design (kW)	Energy Class (Heating)	SCOP (Energy Class)	9.000	10.000	12.000	13.000
U2MRSL(2)-18	18.000	21.000	5.3	A++	6.3	5.8	A+	4.1	9.000	10.000	12.000	13.000
U2MRSL(3)-27	27.000	30.000	8.1	A++	7.0	8.6	A	3.9	9.000	10.000	12.000	13.000
U2MRSL(4)-36	36.000	41.000	10.55	A+	5.8	10.9	A	3.8	9.000	10.000	12.000	13.000



SPECIFICATIONS		U2MRSL(2)-18	U2MRSL(3)-27	U2MRSL(4)-36
Voltage / Frequency / Phase (V/Hz/Ph)		230 / 50 / 1	230 / 50 / 1	230 / 50 / 1
Indoor Number of Units (Min.-Max.)		1-2	1-3	1-4
Noise Level (dB(A))		61	61	64
Sound Power Level (dB(A))		63	67	67
Dimensions WxHxD (mm)		845x700x320	900x860x315	990x965x345
Net Weight Outdoor (kg)		48	62	78
Compressor Type		Twin-rotary	Twin-rotary	Twin-rotary
Liquid Line / Gas Line		2x1/4" / 3/8"	3x1/4" / 3/8"	4x1/4" / 3/8"
Power Supply Wire Outdoor (Noxmm2) / Fuses (A)		3x2.5 / 16	3x2.5 / 20	3x4 / 25
Refrigerant		R410A / 1.900g	R410A / 2.400g	R410A / 2.700g
Maximum Pipe Length (m)	Total	30	45	60
	For one Indoor Unit	20	25	30
Max. Height Difference Between Indoor and Outdoor Unit (m)	Outdoor Unit Higher than Indoor Unit	10	10	10
	Outdoor Unit Lower than Indoor Unit	15	15	15
Max. Height Difference Between Indoor Units (m)		10	10	10
Operation Temperature Range (°C)	Cooling / Heating	-15°C ~ 50 °C / -15°C ~ 24°C	-15°C ~ 50 °C / -15°C ~ 24°C	-15°C ~ 50 °C / -15°C ~ 24°C

multi split freematch

Multi split free match units offer flexibility, maximum savings, and high returns while meeting the requirements of your space. You can select up to 4 indoor units with one outdoor unit.

Connection of one Outdoor Unit with up to Four Indoor Units

A++ Energy Class Eco Design Units

ALL DC INVERTER High Technology
DC INVERTER compressor and indoor / outdoor fan motors for the best efficiency in extreme weather conditions with maximum energy savings.

Cooling Mode in Low Ambient temperatures from -15°C to +50°C

Flexible Installation
Maximum total pipe length up to 75m.

5 Steps Outdoor Fan Speed
The outdoor DC fan motor speed increases from 2 steps to 5, delivering a significantly higher efficiency.

Wide Operation Range
With up to 25 stages (F1-F25) compressor frequency. The frequency range is increased as much as 70%, allowing the system to run smoothly. It also provides accurate control for a comfortable environment and great energy savings.

Wide Voltage Range (198-264V)
Suitable for unstable power supply areas.

Power Relay Control

Low Noise Air Flow System

Hydrophilic Aluminum Fins

Discharge Pipe Sensor Protection

Electronic Expansion Valve Per Circuit

Error Diagnosis Display

*Energy classification refers to the cooling mode

Wall Mounted Units

12 Steps Indoor Fan Speed

Up to 12 steps indoor fan speed, ensures more accurate temperature control and creates an ultra comfortable indoor environment.

Cold Catalyst Filter

Eliminates formaldehyde and other volatile organic compounds (VOCs) as well as harmful gases and odors.

Hot Start Operation

The indoor coil sensor controls the indoor fan and prevents cold air from entering the room during start up in heating mode.

Louver Position Memory

The horizontal louver will automatically move to the same position as it was set in the previous operation.

Auto Restart

Saves the last settings in case of power failure.

Auto Error Diagnosis

Back - Lit Display

Cassette Type 360°

Compact Design

Suitable for easy installations in one standard ceiling tile.

360° Air Outlet

Creates a soft and gentle air-flow which circulates throughout the room and provides an even temperature distribution.

External Air Duct Outlet

Flexible air supply due to air outlet slots.

Fresh Air Intake

For a clean and healthy environment.

Hot Start Operation

The indoor coil sensor controls the indoor fan and prevents cold air from entering the room during start up in heating mode.

Sleep Function

Sleep mode saves energy by gradually increasing (summer) or decreasing (winter) the indoor temperature, to match your body's temperature helping you sleep comfortably.

Auto Restart

Saves the last settings in case of a power outage.

Overflow Pump Indicator

Indicates the water level in order to empty the water tank on time.

Built-in E-Box

The E-box is simply and safely built inside the indoor unit. This integrated design provides a more compact body size.

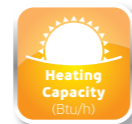
Built-in Drain Pump

The drain pump can lift the condensing water up to 750mm.

multi split



A2MVI



A2MVI-09

9.000

10.000

A2MVI-12

12.000

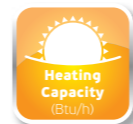
13.000

A2MVI-18

17.000

18.000

LV2MCI



LV2MCI-09

9.000

10.000

LV2MCI-12

12.000

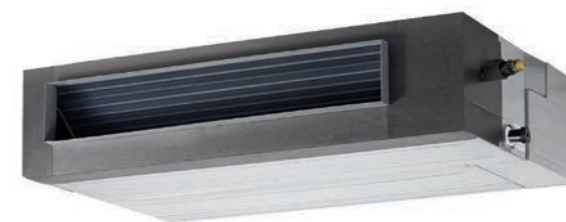
13.000

LV2MCI-18

18.000

18.000

multi split



LV2MLI



LV2MLI-09

9.000

10.000

LV2MLI-12

12.000

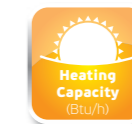
13.000

LV2MLI-18

18.000

18.000

LV2MDI



LV2MDI-09

9.000

10.000

LV2MDI-12

12.000

13.000

LV2MDI-18

18.000

20.000

SPECIFICATIONS

R410A		CE	ISO 9001	ISO 14001	RoHS	A2MVI-09	A2MVI-12	A2MVI-18	LV2MCI-09	LV2MCI-12	LV2MCI-18
Voltage / Frequency / Phase (V/Hz/Ph)						230 / 50 / 1	230 / 50 / 1	230 / 50 / 1	230 / 50 / 1	230 / 50 / 1	230 / 50 / 1
Current Input (A)	Cooling					0.21	0.11	0.14	0.18	0.18	0.44
	Heating					0.21	0.11	0.14	0.18	0.18	0.44
Power Input (W)	Cooling					48	24	34	40	40	102
	Heating					48	24	34	40	40	102
Air Flow Volume (m³/h)						620/540/440	630/550/430	730/480/400	580	720	800
Noise Level (dB(A))						41/38/31	43/40/31	41/33/31	49	48	46
Sound Power Level (dB(A))						58	57	55	53	54	54
Dimensions WxHxD (mm)	Panel					-	-	-	647x50x647	647x50x647	647x50x647
	Indoor					800x275x188	800x275x188	940x275x205	570x260x570	570x260x570	570x260x570
Net Weight (kg)	Panel					-	-	-	2.5	2.5	2.5
	Indoor					7	7	9	16	16	18
Liquid Line / Gas Line						1/4" / 3/8"	1/4" / 3/8"	1/4" / 1/2"	1/4" / 3/8"	1/4" / 3/8"	1/4" / 1/2"
Static Pressure (Pa)						-	-	-	-	-	-
Operation	Cooling					17°C ~ 32°C	17°C ~ 32°C	17°C ~ 32°C	17°C ~ 32°C	17°C ~ 32°C	17°C ~ 32°C
	Heating					0°C ~ 30°C	0°C ~ 30°C	0°C ~ 30°C	0°C ~ 30°C	0°C ~ 30°C	0°C ~ 30°C

SPECIFICATIONS

R410A		CE	ISO 9001	ISO 14001	RoHS	LV2MLI-09	LV2MLI-12	LV2MLI-18	LV2MDI-09	LV2MDI-12	LV2MDI-18
Voltage / Frequency / Phase (V/Hz/Ph)						230 / 50 / 1	230 / 50 / 1	230 / 50 / 1	230 / 50 / 1	230 / 50 / 1	230 / 50 / 1
Current Input (A)	Cooling					0.13	0.17	0.22	0.13	0.17	0.48
	Heating					0.13	0.17	0.22	0.13	0.17	0.48
Power Input (W)	Cooling					30	40	50	30	40	107
	Heating					30	40	50	30	40	107
Air Flow Volume (m³/h)						680	650	740	600	680	1.000
Noise Level (dB(A))						47	47	48	43	43	46
Sound Power Level (dB(A))						57	57	59	55	55	56
Dimensions WxHxD (mm)	Panel					-	-	-	-	-	-
	Indoor					700x600x210	700x600x210	700x600x210	700x210x635	700x210x635	920x210x635
Net Weight (kg)	Panel					-	-	-	-	-	-
	Indoor					13	15	15	19.5	18	23
Liquid Line / Gas Line						1/4" / 3/8"	1/4" / 3/8"	1/4" / 1/2"	1/4" / 3/8"	1/4" / 3/8"	1/4" / 1/2"
Static Pressure (Pa)						-	-	-	40	40	70
Operation	Cooling					17°C ~ 32°C	17°C ~ 32°C	17°C ~ 32°C	17°C ~ 32°C	17°C ~ 32°C	17°C ~ 32°C
	Heating					0°C ~ 30°C	0°C ~ 30°C	0°C ~ 30°C	0°C ~ 30°C	0°C ~ 30°C	0°C ~ 30°C

Console

Compact Design

Hot Start Operation

The indoor coil sensor controls the indoor fan and prevents cold air from entering the room during start up in heating mode.

Sleep Function

Sleep mode saves energy by gradually increasing (summer) or decreasing (winter) the indoor temperature, to match your body's temperature helping you sleep comfortably.

Auto Restart

Saves the last settings in case of a power outage.

Wide Angle Air Flow

For greater air circulation in cooling mode.

2 Ways Draining Connection

The drainage hose can be connected in both the left and the right side of the indoor unit for easy installation.

Double Air Outlet

Air outlets on the top and bottom to enjoy fast heating.

Ducted Units

Super Slim Design

Smaller indoor unit's height compared to the conventional indoor units.

Return Air Intake

Flexible air intake from the back or the bottom part of the unit.

Fresh Air Intake

For a clean and healthy environment.

Adjustable Static Pressure Switch

Hot Start Operation

The indoor coil sensor controls the indoor fan and prevents cold air from entering the room during start up in heating mode.

Auto Restart

Saves the last settings in case of a power outage.

Sleep Function

Sleep mode saves energy by gradually increasing (summer) or decreasing (winter) the indoor temperature, to match your body's temperature helping you sleep comfortably.

Ability to connect with BMS

Combination Table

Indoor Unit A	Indoor Unit B	Indoor Unit C	Indoor Unit D	U2MRSL(2)-18	U2MRSL(3)-27	U2MRSL(4)-36
9k	-	-	-	•	•	•
12k	-	-	-	•	•	•
18k	-	-	-	•	•	•
9k	9k	-	-	•	•	•
9k	12k	-	-	•	•	•
9k	18k	-	-	•	•	•
12k	12k	-	-	•	•	•
12k	18k	-	-	•	•	•
18k	18k	-	-	•	•	•
9k	9k	9k	-	•	•	•
9k	9k	12k	-	•	•	•
9k	9k	18k	-	•	•	•
9k	12k	12k	-	•	•	•
9k	12k	18k	-	•	•	•
9k	18k	18k	-	•	•	•
12k	12k	12k	-	•	•	•
12k	12k	18k	-	•	•	•
12k	18k	18k	-	•	•	•
18k	12k	18k	-	•	•	•

• : Available Combination of Indoor Units / - : Not selected Indoor Units / Blank : Unavailable Combination

Combination Table

Indoor Unit A	Indoor Unit B	Indoor Unit C	Indoor Unit D	Indoor Unit E	U2MRSL(2)-18	U2MRSL(3)-27	U2MRSL(4)-36
9k	9k	9k	9k	-			•
9k	9k	9k	12k	-			•
9k	9k	9k	18k	-			•
9k	9k	12k	12k	-			•
9k	9k	12k	18k	-			•
9k	9k	18k	18k	-			•
9k	12k	12k	12k	-			•
9k	12k	12k	18k	-			•
12k	12k	12k	12k	-			•
12k	12k	12k	18k	-			•
9k	9k	9k	9k	9k			
9k	9k	9k	9k	12k			
9k	9k	9k	9k	18k			
9k	9k	9k	12k	12k			
9k	9k	9k	12k	18k			
9k	9k	12k	12k	12k			
9k	12k	12k	12k	12k			
12k	12k	12k	12k	12k			

• : Available Combination of Indoor Units / - : Not selected Indoor Units / Blank : Unavailable Combination

home appliances



dehumidifiers

ionizers

portable
air conditioners

refrigerators

freezers

all in... **10-20**
Armony

EVA
BORN TO DO THIS



- Auto Restart Function
- Auto Defrosting
- Self Diagnosis & Auto Protection
- Convenient Handle
- Transparent Water Level Indication
- LED Display
- Filter Cleaning

The Ultimate
Care
for you!



- Auto Restart Function
- 24 h Timer
- LED Display
- Convenient Handle
- Self Diagnosis & Auto Protection
- Auto Defrosting
- Transparent Water Level Indication
- silent

POWER
30·40·50
ALL THE
POWER
YOU NEED



- Auto Restart Function
- Turbo
- Auto Defrosting
- Self Diagnosis & Auto Protection
- Timer
- Transparent Water Level Indication
- LED Display
- Filter Cleaning
- Omni Directional Caster
- smart dehumidifying
- water pump



- Auto Restart Function
- Turbo
- Auto Defrosting
- Self Diagnosis & Auto Protection
- Timer
- Transparent Water Level Indication
- LED Display
- Filter Cleaning
- Omni Directional Caster
- ionizer technology
- smart dehumidifying
- dry laundry



dehumidifiers

army, care, eva, power

Choose the right unit that suits your needs from a wide range of Inventor dehumidifiers! Inventor dehumidifiers can bring maximum results and create the ideal conditions even in the most demanding rooms or large commercial spaces. Provides excellent performance and features for every space. Inventor dehumidifiers are the right solution to putting an end to moisture.

	Armony - 10	Armony - 20	Care	EVA - 16	EVA - 20	Power - 30	Power - 40	Power - 50
Dehumidifying Capacity (L/24h)	10	20	8	16	20	30	40	50
Control Type	Electronic	Electronic	Electronic	Electronic	Electronic	Electronic	Electronic	Electronic
Voltage / Frequency / Phase (V/Hz/Ph)	220-240 / 50 / 1	220-240 / 50 / 1	220-240 / 50 / 1	220-240 / 50 / 1	220-240 / 50 / 1	220-240 / 50 / 1	220-240 / 50 / 1	220-240 / 50 / 1
Power Input (W)	220	555	290	350	440	465	560	775
Current Input (A)	1.3	3.0	2	2.0	2.1	2.5	2.7	3.6
Water Tank Volume (L)	1.3	3.5	2	3	3	3	6	6
Air Flow (m³/h)	130	165	120	150	150	210/180	345/320	345/320
Noise Level (dB(A))	46	50	40/43	50	50	52/54	50/52	50/52
Dimensions WxDxH (mm)	330x260x420	380x300x480	308x247x456	350x245x510	350x245x510	386x260x500	392x282x616	392x282x616
Net Weight (kg)	10.5	13.5	11.2	13.5	13.7	15.3	18.1	19.8
Refrigerant	R134a/90g	R134a/115g	R134a/80g	R134a/105g	R134a/120g	R410A/220g	R410A/190g	R410A/290g
Applicable room area (m²)	16 - 40	37 - 110	12 - 35	29 - 90	37 - 120	58 - 150	80 - 170	100 - 200
Operation Temperature Range (°C)	5°C - 35°C	5°C - 35°C	5°C - 35°C	5°C - 35°C	5°C - 35°C	5°C - 35°C	5°C - 35°C	5°C - 35°C

- Air Ionizer**
It generates negative ions that disinfect and sterilize the air while creating a healthy, secure, and tranquil environment.
- Dry Laundry**
Dry laundry mode, is the solution for rainy days. Place the dehumidifier in a room with your wet clothes and activate the "Dry Laundry" (Dryer) function. The device will operate in continuous dehumidifying mode until the humidity level reaches 45%. When this level is reached the device will operate in fan function for the next 2 hours, leaving your clothes dry and fresh.
- Smart dehumidifying SMD/COMFORT**
Automatically adjusts the area's humidity level according to the area's temperature. Smart dehumidifying function offers ideal air quality with high energy savings.
- Built-in Water Pump**
For the best utilization of the continuous drainage function it is equipped with a water pump which is lifting the water up to 5 meters.
- Digital Display**
It displays the room's humidity level and the set humidity level.
- Humidity Set**
Control your desired humidity level by using the «+» and «-» keys.
- Continuous Dehumidification**
During the continuous dehumidification operation, the unit operates constantly removing the humidity from the air. Preset humidity levels will not be acknowledged by the unit during this operation.
- Water Tank**
The water tank is equipped with a window allowing for an easy assessment of the water level. When the water tank is full, the indicator P2 will be displayed on the screen and the device automatically shuts off, preventing overflow.
- Auto Defrost**
Efficient operation even in cold spaces (up to 5°C).
- Ergonomic Handle**
Easy movement and repositioning.
- Rotating Wheels**
Rotating wheels for easy movement and transportation.
- Auto Restart**
After a power outage, the device will automatically start with the previous settings.
- Turbo**
For quick and direct dehumidification use the Turbo mode.
- Continuous Drainage**
For continuous drainage simply connect a hose from the unit to a drainage system.

Air filters

There are 3 powerful air filters built in which remove dust, odors, and harmful gases from your room, creating pure and fresh air!

High Performance Air Purification

Spring air purifier re-freshens your room 8 times a day! Start enjoying continuous clean, quality air.

Powerful Air Ionizer**Auto Mode****8-Hour Timer****Air Quality Indicator**

Displays the quality of the air in the room: bad, normal, or good.

Odor Sensitivity Sensor

The sensor will detect the level of odors in the room and make the proper adjustments to maintain the ideal air quality.

Filter Cleaning Indicator**4-Stage Operation****Smart Uniform Air Diffusion**

Ideal for children's rooms!



Spring
Spring
Everywhere

ionizerspring

Open your Home to Spring
Air quality always and everywhere.
With multiple air purifying functions
you can immediately free your room
of harmful gases and unpleasant odors.
Enjoy every moment, Spring Everywhere!

SPECIFICATIONS

	Spring
Application Area (m ²)	20
Voltage / Frequency / Phase (V/Hz/Ph)	220-240 / 50 / 1
Power Input (W)	40
Dimensions WxDxH (mm)	320x200x495
Net Weight (kg)	4.5
Noise Level (dB(A))	55
CADR (Clean Air Delivery Rate) (m ³ /h)	172



ionizer
technology



multiple
cleaning
filters



HEPA
filters



Formaldehyde
Removal of 91%



4-Stage Air
Flow Control



Refreshing
Ionizer



1/2/4/8 hr
Timer



Powerful
CADR



Smart Air
Control System

COOL



Too
Cool
To be
True

portablecool

Cool, the Portable miracle!
Wherever you are Cool promises
to refresh you. Enjoy easy
movement, high efficiency
in its category, and easy airflow
thanks to adjustable swings.

SPECIFICATIONS

	COOL
Voltage / Frequency / Phase (V/Hz/Ph)	220-240 / 50 / 1
Power Input Cooling (W)	4.2
Current Input Cooling (W)	900
Air Flow Volume (Hi / Med / Low) (m ³ /h)	330 / 300 / 250
Dehumidifying Volume (L/h)	0.75
Noise Level (Low / Med / High) (dB(A))	50 / 52 / 54
Sound Power Level (dB(A))	65/63/61

	COOL
Compressor Type	Rotary
Dimensions WxDxH (mm)	300x345x790
Net Weight (kg)	24.0
Refrigerant	R410A / 460g



8.000



2.6



A

Uniform air diffusion**Air Conditioner Suitable for All Spaces and All Places!****A Energy Class****ECO Design****Modern Design****Rotating Wheels**

Rotating wheels for easy movement and transportation.

Special Storage Case for the Remote Control**Digital Control Panel with LCD Screen****Thin, Easy to Use Remote Control****3 Fan Speeds****Air Filters that Provide Air Quality****Window Kit Included With Flexible Duct**

FreshLife

		Silver Bar Rubik	Kryo Black Board	Kryo Green Board	Kryo Red	Kryo Retro Cans
Type		One door	Two door	Two door	Two door	Two door
Color		Rubik	Black Board	Green Board	Red	Multi
Total net capacity (L)		93	207	207	207	207
Net capacity fridge compartment (L)		93	166	166	166	166
Net capacity freezer compartment (L)		-	41	41	41	41
Freezer's stars		-	****	****	****	****
Energy class		A+	A+	A+	A+	A+
Energy consumption	Daily (kWh/ 24hours)	0.30	0.466	0.466	0.466	0.466
	Annual (kWh/annum)	110	170	170	170	170
Power input (W)		65	80	80	80	80
Current input (A)		0.31	0.5	0.5	0.5	0.5
Voltage / Frequency / Phase (V/Hz/Ph)		230 / 50 / 1	230 / 50 / 1	230 / 50 / 1	230 / 50 / 1	230 / 50 / 1
Door design		Rounded	Rounded	Rounded	Rounded	Rounded
Handle		Integrated	Integrated	Integrated	Integrated	Integrated
Interior light		Yes	Yes	Yes	Yes	Yes
Reversible door		Yes	Yes	Yes	Yes	Yes
Adjustable thermostat		Yes	Yes	Yes	Yes	Yes
Defrost	Fridge	Μηχανική	Μηχανική	Μηχανική	Μηχανική	Μηχανική
	Freezer	-	Μηχανική	Μηχανική	Μηχανική	Μηχανική
Adjustable feet		Yes	Yes	Yes	Yes	Yes
Dimensions HxWxD (mm)		860x472x450	1.430x550x550	1.430x550x550	1.430x550x550	1.430x550x550
Packing dimensions HxWxD (mm)		885x520x465	1.462x580x580	1.462x580x580	1.462x580x580	1.462x580x580
Weight (kg)	Net / Gross	19.8 / 22	40 / 45	40 / 45	40 / 45	40 / 45
Climate class		ST/N	ST/N	ST/N	ST/N	ST/N
Protection against electric shock		I	I	I	I	I
Refrigerant		R600a / 20g	R600a / 47g	R600a / 47g	R600a / 47g	R600a / 47g
Noise level (dB(A))		42	40	40	40	40

Now you can change your mood anytime by drawing with chalk on the Black and Green Board sticker refrigerators. The kitchen is transformed into a fun place!

Silver Bar Rubik

Kryo Black Board

Kryo Green Board

Kryo Red

Kryo Retro Cans

refrigerators exclusive SilverBar - Kryo

Change your mood! Choose Color Kryo Exclusive & Silver Bar Exclusive sticker. Promises to change the way you see your kitchen!

WARRANTY
2
YEARS

Technology in Refrigeration

Energy Consumption

The new Inventor refrigerators have low power consumption and an energy class A+ ranking. Due to the low energy consumption there is a noticeable reduction on the electricity bill.

Minimal Design

Discover the light design of Inventor refrigerators. Lightweight doors with clean lines, modern, charming design and unrivalled brightness. The new Inventor refrigerators series epitomizes style and is easily suited in any kitchen space whether the design is contemporary or classic.

Easily Reversed Door

Inventor refrigerators include easily adjustable doors so they can fit in any kitchen space.

Interior Light

The refrigerator's interior is lit by low energy light bulbs instead of the usual incandescent bulbs and as a result there is an incomparably longer lifetime, higher brightness and nearly zero energy consumption.

Adjustable Feet

Adjustable feet provide functionality to better manage Inventor refrigerators.

Adjustable shelves

The shelves of the refrigerators can be easily removed, allowing the interior space to be quickly adjusted to your specific needs.

4 Star Freezer (****) (Kryo)

Low Noise Level

Defrost Water Outlet

Adjustable Thermostat

Climate Class ST/N

For Excellent Operation from +16°C up to +38°C.

Environment Friendly Refrigerant R600a

FreshLife



		Silver Mini	Silver Bar	Kryo	Light
Type		One door	One door	Two door	Two door
Color		Silver	Silver	Silver	Silver
Total net capacity (L)		45	93	207	240
Net capacity fridge compartment (L)		45	93	166	199
Net capacity freezer compartment (L)		-	-	41	41
Freezer's stars		-	-	****	****
Energy class		A+	A+	A+	A+
Energy consumption	Daily (kWh/ 24hours)	0.29	0.30	0.466	0.625
	Annual (kWh/annum)	106	110	170	228
Power input (W)		64	65	80	85
Current input (A)		0.5	0.31	0.5	0.5
Voltage / Frequency / Phase (V/Hz/Ph)		230 / 50 / 1	230 / 50 / 1	230 / 50 / 1	230 / 50 / 1
Door design		Rounded	Rounded	Rounded	Rounded
Handle		Integrated	Integrated	Integrated	Integrated
Interior light		No	Yes	Yes	Yes
Reversible door		Yes	Yes	Yes	Yes
Adjustable thermostat		Yes	Yes	Yes	Yes
Defrost	Fridge	Μηχανική	Μηχανική	Μηχανική	Μηχανική
	Freezer	-	-	Μηχανική	Μηχανική
Adjustable feet		Yes	Yes	Yes	Yes
Dimensions HxWxD (mm)		492x472x450	860x472x450	1.430x550x550	1.590x550x550
Packing dimensions HxWxD (mm)		520x465x520	885x520x465	1.462x580x580	1.622x580x580
Weight (kg)	Net / Gross	14 / 16	19.8 / 22	40 / 45	42 / 47
Climate class		ST/N	ST/N	ST/N	ST/N
Protection against electric shock		I	I	I	I
Refrigerant		R600a / 16g	R600a / 20g	R600a / 47g	R600a / 47g
Noise level (dB(A))		45	42	40	42

refrigerators

SilverMini, SilverBar, kryo, Light

Light & simple design, compatible with every type of kitchen.
Includes adjustments for maintaining the correct humidity.
Excellent food and vegetable preservation with less consumption
and greater performance among the same models in the market.



Technology in Refrigeration

Energy Consumption

The new Inventor refrigerators have an energy class A+ ranking and low energy consumption. Due to the low energy consumption there is a noticeable reduction on the electricity bill.

Minimal Design

Discover the light design of Inventor refrigerators. Lightweight doors with clean lines, modern, charming design and unrivalled brightness. The new Inventor refrigerators series epitomizes style and is easily suited in any kitchen space whether the design is contemporary or classic.

Easily Reversed Door

Inventor refrigerators include easily adjustable doors so they can fit in any kitchen space.

Interior Light (Light, Kryo, Silver Bar)

The refrigerator's interior is lit by low energy light bulbs instead of the usual incandescent bulbs and as a result there is an incomparable longer lifetime, higher brightness and nearly zero energy consumption.

Adjustable Feet

Adjustable feet provide functionality to better manage Inventor refrigerators.

Adjustable shelves

The shelves of the refrigerators can be easily removed, allowing the interior space to be quickly adjusted to your specific needs.

4 Star Freezer (****) (Light & Kryo)

Low Noise Level

Defrost Water Outlet

Adjustable Thermostat

Climate Class ST/N

For excellent operation from +16°C up to +38°C.

Environment Friendly Refrigerant R600a

FreezeLife



Crystal Air



Artic Air



Ice Pop



Ice Box



	Crystal Air	Artic Air	Ice Pop	Ice Box	Ice Feel	Ice Line	
Type	Horizontal freezer	Horizontal freezer	Horizontal freezer	Horizontal freezer	Upright Freezer	Upright Freezer	
Net freezer capacity (L)	99	142	198	295	86	157	
Color	White	White	White	White	Silver	Silver	
Energy class	A+	A+	A+	A+	A+	A+	
No Frost	No	No	No	No	No	No	
Power input (W)	80	85	90	130	70	70	
Current input (A)	0.50	0.40	0.45	0.66	0.48	0.50	
Voltage / Frequency / Phase (V/Hz/Ph)	230 / 50 / 1	230 / 50 / 1	230 / 50 / 1	230 / 50 / 1	220-240 / 50 / 1	220-240 / 50 / 1	
Energy consumption (kWh)	Daily / Annual	0.46 / 168	0.52 / 190	0.6 / 219	0.735 / 268	0.48 / 175	0.584 / 213
Door design	Horizontal	Horizontal	Horizontal	Horizontal	Vertical	Vertical	
Handle	Integrated	Integrated	Integrated	Integrated	-	-	
Defrost water outlet	Yes	Yes	Yes	Yes	Yes	Yes	
Freezing Capacity (kg/24hours)	4.5	6.5	9	14	0.48	0.584	
Max storage time after power failure (hours)	45	41	45.5	66	15	15	
Interior light	No	No	No	No	No	No	
Reversible door	No	No	No	No	Yes	Yes	
Adjustable thermostat	Yes	Yes	Yes	Yes	Yes	Yes	
Freezer star rating	****	****	****	****	****	****	
Adjustable feet	Yes	Yes	Yes	Yes	Yes	Yes	
Dimensions WxDxH (mm)	565x523x850	730x523x850	945x523x850	1.115x670x850	845x553x574	1.420x550x550	
Packing Dimensions WxDxH (mm)	605x545x885	770x545x885	985x545x885	1.155x700x885	875x574x595	1.462x580x580	
Fitted / Not fitted	Not fitted	Not fitted	Not fitted	Not fitted	Not fitted	Not fitted	
Weight (kg)	Net / Gross	27 / 30	30 / 33	35 / 38	42 / 46	29.25 / 31.65	44 / 49
Climate class	N/SN/ST/T	N/SN/ST/T	N/SN/ST/T	N/SN/ST/T	ST/N	ST/N/SN	
Protection against electric shock	I	I	I	I	I	I	
Refrigerant	R600a / 38g	R600a / 56g	R600a / 56g	R600a / 57g	R600a / 40g	R600a / 54g	
Noise level (dB(A))	42	42	42	44	42	42	



Ice Line



Ice Feel

freezers

Horizontal - Upright

High performance with low energy consumption. Design meets functionality! Now you can enjoy fresh food at every moment.

A+ Energy Class
For maximum energy savings.

White Color
For horizontal freezers.

Silver Color
For upright freezers.

4 Star Freezer

Low noise level

Adjustable thermostat

Environment Friendly
Refrigerant R600a.

Climate Class N/SN/ST/T
For excellent operation from +10°C up to +43°C.

light commercial



floor standing
cassettes
floor ceiling
ducted



COOLING - HEATING			COOLING			HEATING (Middle Zone)		
Energy Class	Energy Class	SCOP (Energy Class)	Energy Class	Energy Class	SCOP (Energy Class)	Energy Class	Energy Class	SCOP (Energy Class)
V3MFI-24 / V3MFO-24	24.000 (4.100-33.600)	24.000 (4.100-33.700)	-	-	-	7.03	A++	6.1
V1MFI-50B / V1MFO-50B	48.000 (14.400-57.600)	50.000 (15.000-60.000) +12.000	3.28	A	3.51	-	-	-
V1MFI-66B / V1MFO-66B	55.000 (16.500-66.000)	58.000 (17.400-69.600) +12.000	3.26	A	3.78	-	-	-
RMFI-50 / RMFO-50	42.000	49.000 +11.942	2.41	E	2.76	-	-	-
RMFI-66 / RMFO-66	53.500	56.500 + 11.942	2.53	E	2.91	-	-	-

R410A		CE	RoHS	RoHS	RoHS	V3MFI-24/V3MFO-24	V1MFI-50B/V1MFO-50B	V1MFI-66B/V1MFO-66B	RMFI-50/RMFO-50	RMFI-66/RMFO-66	
Voltage / Frequency / Phase (V/Hz/Ph)		220-240 / 50 / 1		380 / 50 / 3		380 / 50 / 3		380 / 50 / 3		380 / 50 / 3	
Rated Current (A)	Cooling / Heating	9.72 / 8.51		7.4 / 7.2		8.4 / 8.2		8.5 / 8.7		10.5 / 9.8	
Power Input (W)	Cooling / Heating	2.190 / 1.950		4.289 / 4.174		4.944 / 4.497		5.100 / 5.200		6.200 / 5.700	
Air Flow (m³/h)		1.100/950/760		2.300		2.300		1.750		2.200	
Speeds		3		3		3		3		3	
Noise Level (dB(A))	Indoor unit (High/Low)	50 / 44 / 38		60 / 57		60 / 57		54 / 50		59 / 55	
	Outdoor unit	60		63		62		62		62	
Noise Level (dB(A))	Indoor unit / Outdoor unit	61.5 / 69		-		-		-		-	
Power Supply Wire Outdoor Unit (Noxmm²)		3x2.5		5x4		5x4		-		5x4	
Fuses (A)		20		3x25		3x25		3x25		3x25	
Power Supply Wire Indoor Unit (Noxmm²)		3x1.5		5x2.5		5x2.5		5x4		-	
Signal Wires (Noxmm²)		4x0.5		4x0.5		4x0.5		3X1 ΜΠΛΕΤΑΖ & 5X2,5		3x1 ΜΠΛΕΤΑΖ & 5x2,5	
Dimensions Indoor Unit WxHxD (mm)		500x1.700x315		610x1.925x390		610x1.925x390		550x1.800x350		600x1.900x358	
Dimensions Outdoor Unit WxHxD (mm)		900x860x315		938x1.369x392		938x1.369x392		900x1.170x350		900x1.170x350	
Net Weight (Kg)	Indoor unit / Outdoor unit	37.6 / 59		62 / 102		63 / 107		50 / 97		65 / 96	
Liquid Line / Gas Line		3/8" / 5/8"		3/8" / 5/8"		3/8" / 5/8"		1/2" / 3/4"		1/2" / 3/4"	
Refrigerant		R410A / 2.200g		R410A / 3.800g		R410A / 4.600g		R410A / 3.300g		R410A / 3.200g	
Operation Temperature Range (°C) Cooling / Heating		-15-50 / -15-24		-15-50 / -15-24		-15-50 / -15-24		18-43 / -07-24		18-43 / -07-24	

V3MFI-24



RMFI-50/66



V1MFI-50B/66B



floorstanding

Your valuable partner! With Exceptional performance ratings and low energy consumptions. The uniform air distribution and smart airflow covers all kinds of spaces.

Lower Power Consumption and Higher Efficiency
Due to the New Defrost function.

Plug-in electric heater
For higher efficiency in heating.

Hot Start Operation
The indoor coil sensor controls the indoor fan and prevents cold air from entering the room during start up in heating mode.

Auto Mode Function
For the ideal indoor environment.

High Air Flow

SANYO Compressor

LCD Display

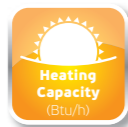
Full Protection
From phase reverse, overload and high/low refrigerant pressure.



V3MCRI-18/U2MRS-18



18000
(3.070-24.200)



18000
(3.250-24.800)

V2MCI-24/U2MRS-24

24.000
(7.200-28.800)

26.000
(7.800-31.200)

V2MCI-36/U2MRS-36

36.000
(11.160-43.560)

40.000
(13.200-49.200)

V3MCI-50/U3MRT-50

47.000
(13.600-55.800)

53.000
(14.300-63.000)

V3MCI-60/U3MRT-60

54.000
(17.000-65.800)

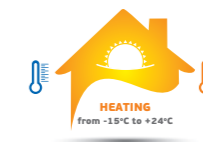
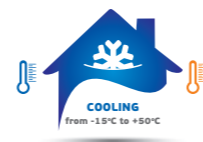
62.000
(18.800-73.400)

IMCI-50/UMLT-50

46.600

49.500

COOLING - HEATING			COOLING			HEATING (Made Zone)		
SEER (Energy Class)	Energy Class	SEER (Energy Class)	Pdesign (W/h)	Energy Class (Cooling)	SEER (Energy Class)	Pdesign (W/h)	Energy Class (Made Zone)	SCOP (Energy Class)
-	-	-	5.3	A+	6.4	4.7	A	3.8
-	-	-	7.3	A+	6.5	8.0	A	3.8
-	-	-	10.5	A	5.2	10.3	A	3.8
-	-	-	14.0	A+	5.6	11.0	A+	4.0
-	-	-	16.0	A+	5.6	11.3	A+	4.0
2.55	E	2.68	-	-	-	-	-	-



R410A CE E0 9001 E0 9008 RoHS		V3MCRI-18/U2MRS-18	V2MCI-24/U2MRS-24	V2MCI-36/U2MRS-36	V3MCI-50/U3MRT-50	V3MCI-60/U3MRT-60	IMCI-50/UMLT-50
Voltage / Frequency / Phase (V/Hz/Ph)		220-240 / 50 / 1	230 / 50 / 1	230 / 50 / 1	380-415 / 3 / 50	380-415 / 3 / 50	380-415 / 3 / 50
Current Input (A)		10.0	13.37	19.81	13.0	14.0	17.0
Power Input (W)		2.200	3.074	4.585	6.700	7.500	6.300
Air Flow Volume (m³/h)		800/650/500	1.780	1.850	1.850/1.600/1.400	1.900/1.650/1.450	1.545
Noise Level (dB(A))	Indoor unit / Outdoor unit	48/40/33 / 57	50 / 60	52 / 65	55/51/48 / 66	52/49/46 / 61	51 / 63
Sound Power Level (dB(A))	Indoor unit / Outdoor unit	59 / 65	62 / 69	64 / 70	67 / 75	69 / 74	-
Power Supply Wire Outdoor Unit (Noxmm²)		3x2.5	3x2.5	3x4	5x2.5	5x2.5	5x2.5
Fuses (A)		1x16	1x16	1x25	3x20	3x20	3x20
Power Supply Wire Indoor (Noxmm²)		3x1.5	3x1.5	3x1.5	3x1.5	3x1.5	3x1.5
Signal Wires (Noxmm²)		3x0.5*	3x0.5*	3x0.5*	3x0.5*	3x0.5*	3x0.5*
Dimensions WxDxH (mm)	Panel	647x647x50	950x950x55	950x950x55	950x950x55	950x950x55	950x950x55
	Indoor unit / Outdoor unit	570x570x260 / 810x310x558	840x840x245 / 900x315x860	840x840x245 / 990x345x965	840x840x287 / 938x392x1369	840x840x287 / 938x392x1.369	840x840x300 / 900x350x1.170
Net Weight (kg)	Panel / Indoor unit / Outdoor unit	2.5 / 16.5 / 36.7	5 / 24 / 59	5 / 26.5 / 73	5 / 28 / 97.1	5 / 28.7 / 102.7	5 / 28.6 / 96
Liquid Line / Gas Line		1/4" / 1/2"	3/8" / 5/8"	3/8" / 5/8"	3/8" / 5/8"	3/8" / 5/8"	3/8" / 3/4"
Refrigerant		R410A / 1.830g	R410A / 2.200g	R410A / 2.750g	R410A / 3.800g	R410A / 4.600g	R410A / 3.250g
Room Temperature	Cooling	-15-50	-15-50	-15-50	-15-50	-15-50	18-43
Range (°C)	Heating	-15-24	-15-24	-15-24	-15-24	-15-24	-07-24

*stranded wire



cassettes

With an energy class A+ rating and All DC Inverter technology, the cassette indoor units can satisfy all your professional needs.

V2MCI, V3MCRI, V3MCI A+ Energy Class Eco Design Units

ALL DC INVERTER Advanced Technology.
DC INVERTER compressor and indoor / outdoor fan motors for excellent efficiency in extreme weather conditions and maximum energy savings.

360° Air Outlet

Creates a soft and gentle air-flow which circulates throughout the room and provides an even temperature.

Wide Operation Range

With up to 25 stages (F1-F25) compressor frequency the frequency range is increased as much as 70%, allowing the system to run smoothly. It also provides accurate control for a comfortable environment and great energy savings.

5 Steps Outdoor Fan Speed

The outdoor DC fan motor speed increases from 2 steps to 5, delivering significantly higher efficiency.

1 Watt Standby

IMCI
SANYO scroll Compressor

Full protection

With high and low pressure switch, phase protector and overload protector.

V2MCI, V3MCRI, V3MCI, IMCI

External Air Duct Outlet

Flexible air supply due to air outlet slots.

Fresh Air Intake

For a clean and healthy environment.

Built-in Drain Pump

The drain pump can lift the condensing water up to 750mm.

Overflow Pump Indicator

Remote Control

On/Off ports on the indoor unit's board and error display.

Hot Start Operation

The indoor coil sensor controls the indoor fan and prevents cold air from entering the room during start up in heating mode.

Sleep Function

Auto Restart

LCD Remote Controller

Touch Screen Wired Controller (Optional)

Wired Controller (Optional)

Centralized Control Manager (Optional)

The centralized controller is a multi functional device that can control up to 64 indoor units.



18.000

18.000

LV2MLI-18 / U2MRS-18

V2MKI-24 / U2MRS-24

24.000

(7.920-29.040)

26.000

(8.060-32.240)

V2MKI-36 / U2MRS-36

36.000

(11.160-43.560)

40.000

(13.200-49.200)

COOLING				HEATING (Middle Zone)			
Performance (kW)	Energy Class (Cooling)	SEER (Energy Class)	Annual Consumption (kWh/cycle)	Performance (kW)	Energy Class (Middle Zone)	SCOP (Energy Class)	Annual Consumption (kWh/cycle)
5.3	A++	6.3	-	5.8	A+	4.1	-
7.3	A++	6.6	-	8.0	A	3.8	-
10.5	A+	5.8	-	10.5	A	3.8	-



	LV2MLI-18 / U2MRS-18	V2MKI-24 / U2MRS-24	V2MKI-36 / U2MRS-36
Voltage / Frequency / Phase (V/Hz/Ph)	230 / 50 / 1	230 / 50 / 1	230 / 50 / 1
Current Input (A)	7.3	13.5	20.11
Power Input (W)	1.680	3.093	4.626
Air Flow Volume (m³/h)	740	1.400	2.200
Noise Level (dB(A))	Indoor unit: 48 Outdoor unit: 61	Indoor unit: 55 Outdoor unit: 60	Indoor unit: 54 Outdoor unit: 65
Sound Power Level (dB(A))	Indoor unit: 59 Outdoor unit: 63	Indoor unit: 63 Outdoor unit: 69	Indoor unit: 65 Outdoor unit: 70
Power Supply Wire Outdoor Unit (Noxmm²)	3x2.5	3x2.5	3x4
Fuses (A)	1x16	1x16	1x25
Power Supply Wire Indoor Unit (Noxmm²)	-	3x1.5	3x1.5
Signal Wires	4x1.5	3x0.5*	3x0.5*
Dimensions WxHxD (mm)	Indoor unit: 700x600x210 Outdoor unit: 845x700x320	Indoor unit: 1.068x235x675 Outdoor unit: 900x315x860	Indoor unit: 1.650x235x675 Outdoor unit: 990x345x965
Net Weight (kg)	Indoor unit: 15 Outdoor unit: 48	Indoor unit: 25 Outdoor unit: 59	Indoor unit: 40 Outdoor unit: 73
Liquid Line / Gas Line	1/4" / 1/2"	3/8" / 5/8"	3/8" / 5/8"
Refrigerant	R410A / 1.900g	R410A / 2.200g	R410A / 2.750g
Operation Temperature Range (°C)	Cooling: -15~50 Heating: -15~24	Cooling: -15~50 Heating: -15~24	Cooling: -15~50 Heating: -15~24

*stranded wire



V2MKI



LV2MLI



floorceiling

Air conditioning units that have an energy class A++ rating and All DC inverter technology while achieving a high performance operation, even in the most difficult situations. A wide range of performance in the heating and cooling modes. An ideal solution for demanding needs.

A++ Energy Class Eco Design Units

ALL DC INVERTER Advanced Technology

DC INVERTER compressor and indoor / outdoor fan motors for excellent efficiency in extreme weather conditions and maximum energy savings.

1 Watt Standby

Power consumption less than 1 Watt in standby mode with energy savings up to 80%.

Hot Start Operation

The indoor coil sensor controls the indoor fan and prevents cold air from entering the room during start up in heating mode.

Excellent Operation

In extreme weather conditions without efficiency loss. Cooling -15°C~50°C / Heating -15°C~30°C.

Cooling Mode

In low ambient temperatures, -15°C~50°C.

Wide Operation Range

With up to 25 stages (F1-F25) compressor frequency. The frequency range is increased as much as 70%, allowing the system to run smoothly. It also provides accurate control for a comfortable environment and great energy savings.

5 Steps Outdoor Fan Speed

The outdoor DC fan motor speed increases from 2 steps to 5, delivering significantly higher efficiency.

Sleep Function

Sleep mode saves energy by gradually increasing (summer) or decreasing (winter) the indoor temperature, to match your body's temperature helping you sleep comfortably.

Auto Restart

Saves the last settings in case of power failure.

Fresh Air Intake

For a clean and healthy environment.

Ability to connect with BMS

Remote Control

On/Off ports on the indoor unit's board and error display.

Touch Screen Wired Controller (Optional)

Wired Controller (Optional)

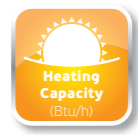
Centralized Control Manager (Optional)

The centralized controller is a multi-functional device that can control up to 64 indoor units.

LCD Remote Controller

2 Ways Draining Connection

The drainage hose can be connected to both the left and the right side of the indoor unit for easy installation.



V2MDI-12/U2MRS-12

12.000
(3.720-14.640)

12.000
(3.840-14.760)

V2MDI-18/U2MRS-18

18.000
(5.580-21.960)

18.000
(5.760-22.140)

V2MDI-24/U2MRS-24

24.000
(7.400-29.280)

26.000
(8.320-31.980)

V2MDI-36/U2MRS-36

36.000
(11.160-43.920)

40.000
(12.800-49.200)

COOLING				HEATING (Middle Zone)			
Power In (kW)	Energy Class (Cooling)	SEER (Energy Class)	Annual Consumption kWh/cooling	Power In (kW)	Energy Class (Middle Zone)	SCOP (Energy Class)	Annual Consumption kWh/heating
3.5	A	5.3	231	3.5	A	3.8	1.289
5.3	A++	6.4	290	5.3	A	3.8	1.953
7.2	A++	6.7	376	8.0	A	3.8	2.947
10.5	A	5.4	681	10.5	A	3.8	3.868



V2MDI



R410A		CE	RoHS	REACH	V2MDI-12/U2MRS-12	V2MDI-18/U2MRS-18	V2MDI-24/U2MRS-24	V2MDI-36/U2MRS-36
Voltage / Frequency / Phase (V/Hz/Ph)					230 / 50 / 1	230 / 50 / 1	230 / 50 / 1	230 / 50 / 1
Current Input (A)					5.3	9.64	13.5	20.11
Current Input (W)					1.100	2.217	3.094	4.626
Air Flow Volume (m³/h)					800	1.400	1.700	2.270
External Static Pressure (Pa)					40	70	70	80
Noise Level (dB(A))	Indoor unit / Outdoor unit				41 / 58	46 / 60	46 / 60	46 / 65
Sound Power Level (dB(A))	Indoor unit / Outdoor unit				57 / 61	59 / 65	63 / 69	63 / 70
Power Supply Wire Outdoor Unit (Noxmm²)					3x2.5	3x2.5	3x2.5	3x4
Fuses (A)					1x16	1x16	1x16	1x25
Power Supply Wire Indoor Unit (Noxmm²)					3x1.5	3x1.5	3x1.5	3x1.5
Signal Wires					4x1.5	3x0.5*	3x0.5*	3x0.5*
Dimensions WxHxD (mm)	Indoor unit				700x635x210	920x635x270	920x635x270	1.200x865x300
	Outdoor unit				760x285x590	845x320x700	900x315x860	990x345x965
Net Weight (kg)	Indoor unit				18	28	28	44
	Outdoor unit				35.5	46	59	73
Liquid Line / Gas Line					1/4" / 3/8"	1/4" / 1/2"	3/8" / 5/8"	3/8" / 5/8"
Refrigerant					R410A / 1.100g	R410A / 1.800g	R410A / 2.200g	R410A / 2.750g
Operation Temperature Range (°C)	Cooling				-15~50	-15~50	-15~50	-15~50
	Heating				-15~24	-15~24	-15~24	-15~24

*stranded wire



ducted

High energy class A++ rating and All DC INVERTER technology with a wide range of performance in cooling and heating modes. The ideal solution that meets every professional need while providing the best temperature conditions.

A++ Energy Class Eco Design units

ALL DC INVERTER advanced technology
DC INVERTER compressor and indoor / outdoor fan motors for excellent efficiency in extreme weather conditions.

1 Watt Standby
Power consumption less than 1 Watt in standby mode with energy savings up to 80%.

Hot Start Operation
The indoor coil sensor controls the indoor fan and prevents cold air from entering the room during start up in heating mode.

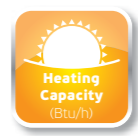
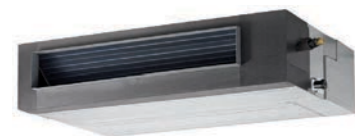
Excellent Operation
In extreme weather conditions without efficiency loss. Cooling -15°C-50°C / Heating -15°C-30°C.

Cooling Mode
In low ambient temperatures, -15°C-50°C.

New Design
Plastic Fans for lower noise and vibrations (V2DI).

Wide Operation Range
With up to 25 stages (F1-F25) compressor frequency. The frequency range is increased as much as 70%, allowing the system to run smoothly. It also provides accurate control for a comfortable environment and great energy saving and maximum energy savings.

5 Steps Outdoor Fan Speed
The outdoor DC fan motor speed increases from 2 steps to 5, delivering significantly higher efficiency.



V3MDI-50/U3MRT-50

48.000
(13.600-55.000) **54.000**
(16.000-60.000)

V3MDI-60/U3MRT-60

55.000
(16.000-60.000) **62.000**
(17.000-68.000)

IMDI-60/UMLT-60

55.000
(11.160-43.920) **60.000**
(12.800-49.200)

COOLING - HEATING			COOLING				HEATING (Middle Zone)			
Energy Class	Energy Class	COP (Energy Class)	Power (kW)	Energy Class (Cooling)	SEER (Energy Class)	Annual Consumption (kWh/kcal)	Power (kW)	Energy Class (Middle Zone)	SCOP (Energy Class)	Annual Consumption (kWh/kcal)
-	-	-	14.0	A++	6.1	231	11.8	A+	4.0	1.289
-	-	-	16.0	A+	5.6	149	12.3	A+	4.0	769
2.46	E/C	3.22	-	-	-	-	-	-	-	-



V2MDI, IMDI



R410A		CE	ISO 9001	ISO 14001	RoHS	V3MDI-50/U3MRT-50	V3MDI-60/U3MRT-60	IMDI-60/UMLT-60
Voltage / Frequency / Phase (V/Hz/Ph)						380-415 / 3 / 50	380-415 / 3 / 50	380 / 50 / 3
Current Input (A)						13.0	14.0	11.31
Current Input (W)						6.700	7.500	6.550
Air Flow Volume (m³/h)						2.950/2.750/2.600	2.950/2.750/2.600	3.150
External Static Pressure (Pa)						100	100	100
Noise Level (dB(A))	Indoor unit / Outdoor unit					50/47/44 / 66	50/47/45 / 61	38 / 63
Sound Power Level (dB(A))	Indoor unit / Outdoor unit					68 / 75	69 / 74	64 / -
Power Supply Wire Outdoor Unit (Noxmm²)						5x2.5	5x2.5	5x2.5
Fuses (A)						3x20	3x20	3x20
Power Supply Wire Indoor Unit (Noxmm²)						3x1.5	3x1.5	3x1.5
Signal Wires						3x0.5*	3x0.5*	3x1*
Dimensions WxHxD (mm)	Indoor unit					1.200x865x300	1.200x865x300	1.200x865x300
	Outdoor unit					938x392x1.369	938x392x1.369	900x350x1.170
Net Weight (kg)	Indoor unit					43.2	43.1	47
	Outdoor unit					97.1	102.7	97
Liquid Line / Gas Line						3/8" / 5/8"	3/8" / 5/8"	3/8" / 3/4"
Refrigerant						R410A / 3.800g	R410A / 4.600g	R410A / 3.200g
Operation Temperature	Cooling					-15-50	-15-50	18-43
Range (°C)	Heating					-15-24	-15-24	-7-24

SPECIFICATIONS

*stranded wire



ducted

Ducted air conditioning units are the ideal solution for professional places. With excellent features, high efficient performances, and maximum energy savings.

Sleep Function
Sleep mode saves energy by gradually increasing (summer) or decreasing (winter) the indoor temperature, to match your body's temperature helping you sleep comfortably.

Auto Restart
Saves the last settings in case of power failure.

Return Air Intake
Flexible air intake from the back or the bottom part of the unit.

Fresh Air Intake
For a clean and healthy environment.

Built-in Drain Pump
The drain pump can lift the condensing water up to 750mm.

Overflow Pump Indicator

The drainage hose can be connected to both the left and the right side of the indoor unit for easy installation

Fresh Air adjustment from the controller (Optional)

Ability to connect with BMS

Remote Control
On/Off ports on the indoor unit's board and error display.

Centralized Control Manager (Optional)
The centralized controller is a multi-functional device that can control up to 64 indoor units.

Remote Controller (Optional)



INVENTOR GREECE

24th km Athens- Lamia National Road & 2,
Thoukididou str., 145 65 Ag.Stefanos
Athens - Greece

INVENTOR ROMANIA

Splaiul Independentei Street,
no 17 101 Izvor Building,
4th entrance 5th floor, ap. 68, Area 5 050093,
Bucharest - Romania

INVENTOR CHINA

15-4B, Chunshuian, No.3 Desheng Zhong Road,
Daliang, Shunde, Foshan,
Guangdong - China

E-mail: export@inventor.ac
Tel: +30211 3003326
Fax: +30211 3003333



www.inventorairconditioner.com

Technical data may be altered without prior notice.
Please contact your dealer.

Company is not responsible for any misprinted data.