



DEHUMIDIFIERS

WiFi FUNCTION

- USER'S MANUAL



WiFi

INVMATE II



USER MANUAL FOR Wi-Fi PAIRING

IMPORTANT NOTE:

It is strongly advised to read this manual carefully before connecting your smart device. Store this manual for future reference.

1 Specification

Model: EU-OSK103

Standard: IEEE 802. 11b/g/n

Antenna Type: Printed PCB Antenna

Frequency : WLAN 2400~2483.5 MHz

Operation Temperature: 0°C~45°C/32°F~113°F

Operation Humidity: 10%~85%

Power Input: DC 5V/300mA

Maximum Transmitted Power: 19.8dBm Max

2 Precautions

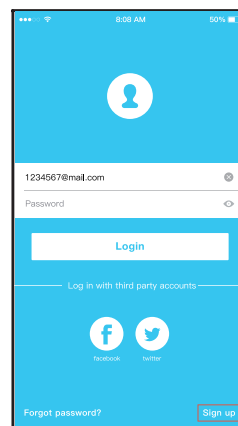
- Applicable system: iOS, Android.
- Suggested: iOS 9.0 or above, Android 6.0 or above
- Please keep you APP updated with the latest version.
- It is possible that some Android and IOS devices may not be compatible with this APP. Our company will not be held responsible for any issues that are a result of incompatibility.
- **Wireless safety strategy**
This APP supports WPA PSK/WPA2 PSK encryption. It also supports no encryption, but this is not suggested.
- **Cautions**
 - Due to various network situations you might experience a short delay between the screen and the display, this is normal.
 - In order to use the QR code option, the cam of your smartphone or tablet should be 5mp or above.
 - Under certain network connections, it is possible the pairing could time out with no connection, if this occurs please perform network configuration once again.
 - For improvement purposes, this APP may be updated without any prior notice. The actual configuration process may be slightly different from the one mentioned in this manual.
 - Please check our Website for more information

3 Download And Install App

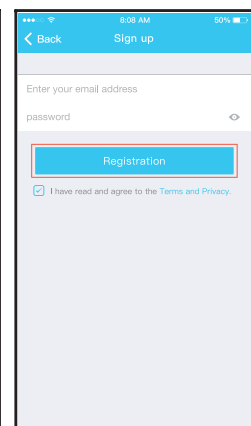
CAUTION: The QR code below, is for downloading the APP only.



- Android users: scan Android QR code or go to google play, search "INVMATE II" app and download it.
- IOS users: scan iOS QR code or go to APP Store, search "INVMATE II" app and download it.



[1] Click "Sign Up"



[2] Enter your email address and password, and then click "Registration"

4 Network Configuration Cautions

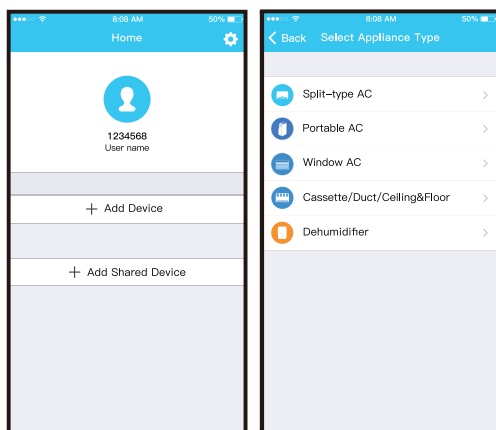
- It is necessary to forget any other around network and make sure the Android or iOS device just connect to the Wireless network you want to configure.
- Be certain that the Android or IOS platforms operate correct, and connect to your selected Wireless network automatically.

Kindly reminder:

The whole process should be completed within 8 minutes. If this process is not complete in the given time frame, it will need to be repeated.

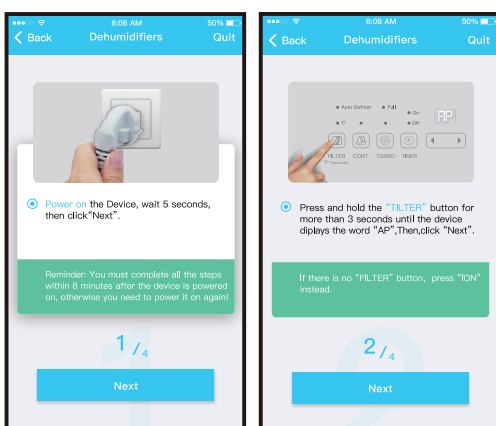
■ Connecting with an Android device

1. Be certain that your smartphone or tablet is already connected to the Wireless network which is going to be used in this process. Moreover, please forget from your device all other wireless networks, in order not to influence your configuration process.
2. Activate the AP mode (for further details please refer to the User Manual).

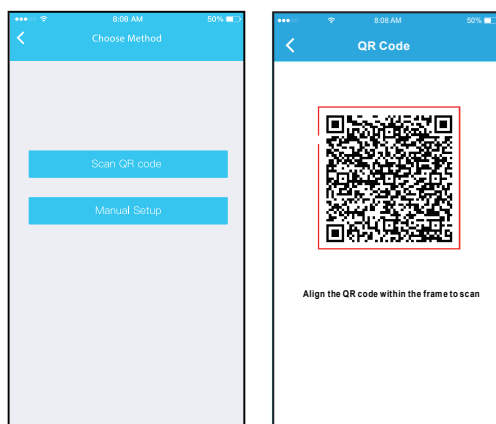


[5] Press “+ Add Device”

[6] Select the preferred device.



[7] Follow the above steps to enter “AP” mode.

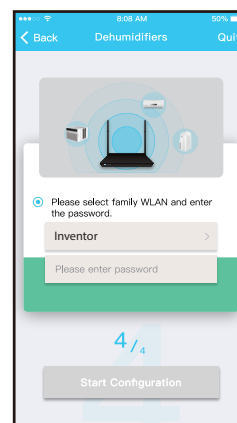


[8] Choose the network configuration method.

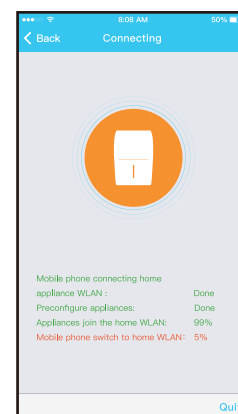
[9] Choose the “Scan the QR code” method.



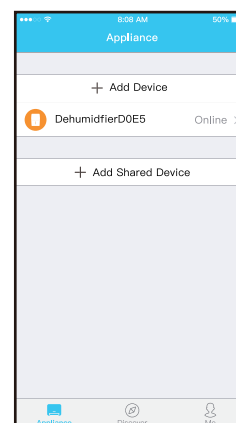
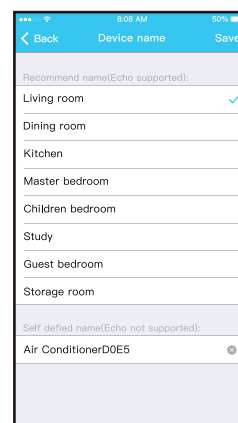
[9] Or choose the “Manual Setup” method.



[10] Please enter your WLAN password



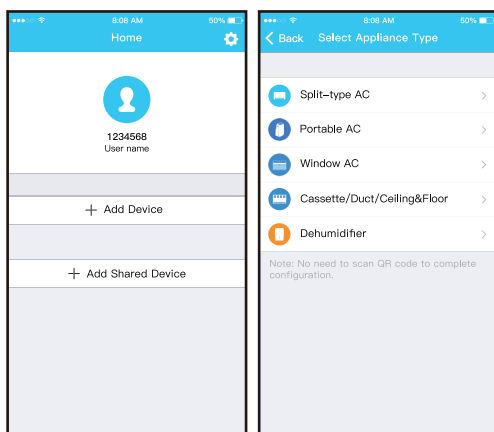
[11] Network configuration is successful



[12] Configuration Success, you can see the device on the list.

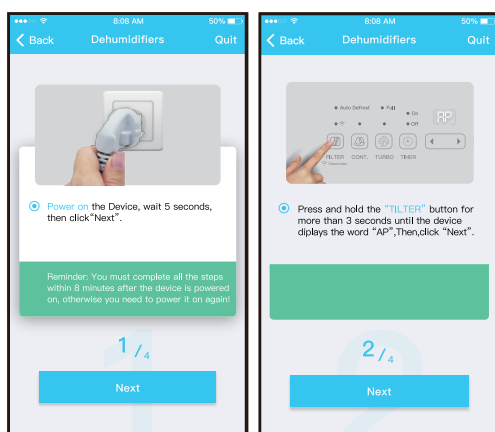
■ Connecting with an IOS device

1. Be certain that your smartphone or tablet is already connected to the Wireless network which is going to be used in this process. Moreover, please forget from your device all other wireless networks, in order not to influence your configuration process.
2. Activate the AP mode (for further details please refer to the User Manual)

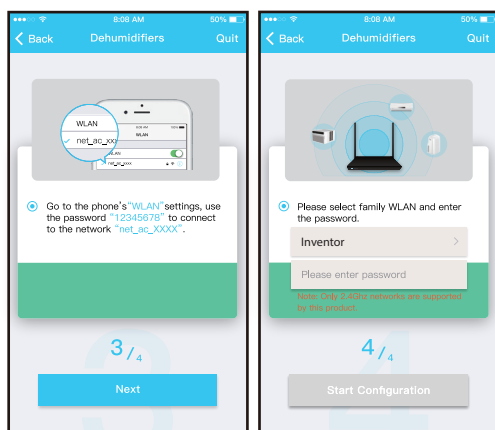


[5] Press “ + Add Device ”

[6] Select the preferred device.

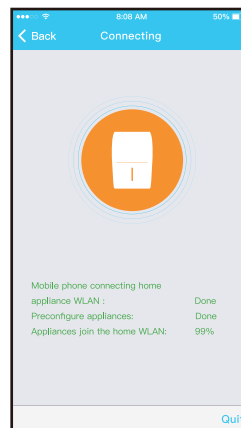


[7] Follow the above steps to enter “AP” mode.



[8] Connect to the Wireless network.

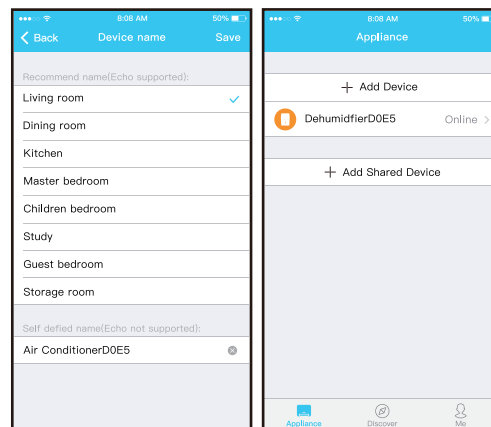
[9] Please enter your WLAN password



[10] Network configuration is successful

NOTE:

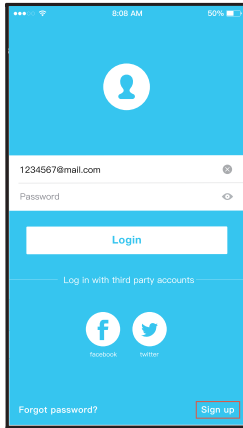
- When the process is complete, “Success” will be displayed on the APP screen of your smartphone or tablet.
- Due to various Internet environments, it is possible that the device status shows as “Offline”. If this is the case, refresh the device list on the APP and check if that the status will change to “Online”. Alternatively, power off the dehumidifier and power back on, the device should show as “Online” after a few minutes.



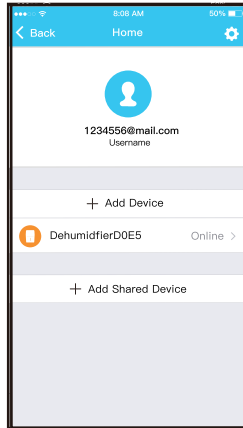
[6] Configuration Success, you can see the device on the list.

6 How To Use App

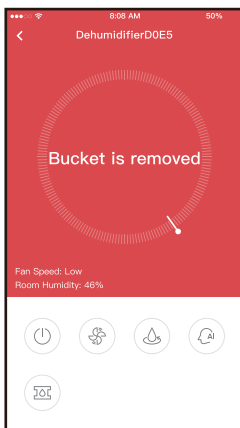
Please be certain that both the smartphone/tablet and the dehumidifier are connected to the Internet prior to using the APP. To remotely access the dehumidifier via the Internet, please follow the next steps:



[1] Click "Login "



[2] Choose the dehumidifier



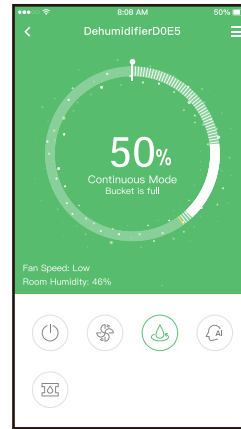
[3] Be certain that the water bucket is in the correct position and has not been removed.

Power, Fan, Continuous, Auto dehumidification

1. Power
Press to turn ON or OFF the dehumidifier.
2. Fan mode
Press FAN to set High, Med, or Low (on some models) fan speed.
3. Continuous mode
Press on Continuous to activate and press once again to deactivate.
4. Auto dehumidification mode (on certain models)
Press on Auto dehumidification for its activation, by pressing once again it will be deactivated.

6. Humidity control.

The humidity range is 35%RH-85%RH. The humidity levels can be changed by adjusting the white pointer clockwise and counter-clockwise. The yellow pointer indicates the current indoor humidity levels.



NOTE:

Not all the features of this APP are available on the dehumidifier, please refer to the user manual for more information.

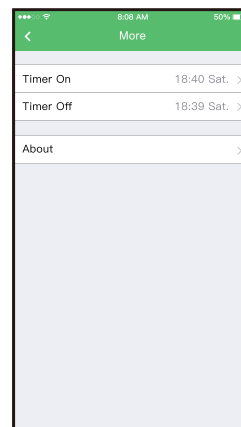
7 Special Functions

Including: Timer on, Timer off,

NOTE: If the dehumidifier does not support the above feature, this setting will not appear on the functions list.

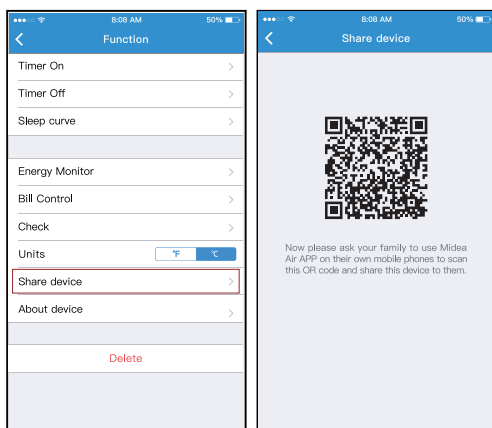
Timer on/Timer off

- The dehumidifier can be programmed to turn ON or OFF on a weekly basis



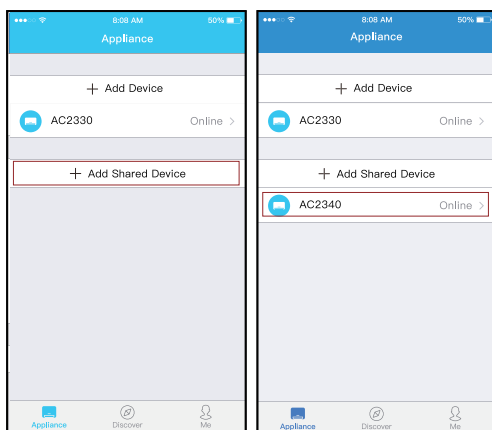
■ Share Device

The dehumidifier can be accessed by multiple users with the Share Device Function.



[1] Click "Share device"

[2] Allow others to scan the displayed QR code.



[3] Click "Add Share Device"

[4] Add the shared device.

CAUTIONS:

CONTAINS FCC ID: 2ADQOMDNA15

CONTAINS IC : 1257 5A-MDNA15

This device complies with Part 15 of the FCC Rules and Industry Canada's licence-exempt RSSs.

Operation is subject to the following two conditions:

- (1) This device may not cause interference; and
- (2) This device must accept any interference, including interference that may cause undesired operation of the device.

Only operate the device in accordance with the instructions supplied.

Changes or modifications to this unit not expressly approved by the party responsible for compliance could void the user's authority to operate the equipment.

This device complies with FCC radiation exposure limits set forth for an uncontrolled environment. In order to avoid the possibility of exceeding the FCC radio frequency exposure limits, human proximity to the antenna shall not be less than 20cm (8 inches) during normal operation.

NOTE: This equipment has been tested and found to comply with the limits for a Class B digital device, pursuant to part 15 of the FCC Rules. These limits are designed to provide reasonable protection against harmful interference in a residential installation. This equipment generates, uses and can radiate radio frequency energy and, if not installed and used in accordance with the instructions, may cause harmful interference to radio communications. However, there is no guarantee that interference will not occur in a particular installation. If this equipment does cause harmful interference to radio or television reception, which can be determined by turning the equipment off and on, the user is encouraged to try to correct the interference by one or more of the following measures:

- Reorient or relocate the receiving antenna.
- Increase the separation between the equipment and receiver.
- Connect the equipment into an outlet on a circuit different from that to which the receiver is connected.
- Consult the dealer or an experienced radio/TV technician for help.

Our company shall not be held liable nor responsible for any connecting issues caused by the Internet, Wireless Router and Smart Devices. For further help please contact the original provider.

NOTE:

All the illustrations in the manual are for explanation purpose only. Your unit may be slightly different.

The actual shapes and figures may vary.

RE Declaration of Conformity (DoC)

Unique identification of this DoC: 20200218001

We, INVENTOR A. G. ELECTRIC APPLIANCES S.A. declare under our sole responsibility that the product:

product name: Smart Kit

trade name: INVENTOR

type or model: OSK103

relevant supplementary information: N.A.

(e.g. lot, batch or serial number, sources and numbers of items)

to which this declaration relates is in conformity with the essential requirements and other relevant requirements of the RE Directive (2014/53/EU).

The product is in conformity with the following standards and/or other normative documents:

HEALTH & SAFETY (Art. 3(1)(a)): EN 62311:2008, EN 60950-1:2006/A2:2013

EMC (Art. 3(1)(b)): Draft ETSI EN 301 489-1 V2.2.0 (2017-03),

Draft ETSI EN 301 489-17 V3.2.0 (2017-03)

SPECTRUM (Art. 3(2)): EN 300 328 V2.1.1 (2016-11)

OTHER (incl. Art. 3(3) and voluntary specs): N.A.

(title and/or number and date of issue of the standard(s) or other normative document(s))

Limitation of validity (if any): N.A.

Supplementary information: N.A.

Notified body involved: N.A.

Technical file held by: INVENTOR A. G. ELECTRIC APPLIANCES S.A.

Place and date of issue (of this DoC): Athens, Greece / 18 Feb 2020

Signed by or for the manufacturer:

INVENTOR A.G. ELECTRIC APPLIANCES S.A.
2, THOUKIDIDOU STR. & 24th KM NATIONAL ROAD
ATHENS - LAMIA
145 65 AG. STEFANOS - ATHENS - GREECE
TEL: +30 211 300 3300 - FAX: +30 211 300 3333
VAT No: EL 005554670 - GEMI: 005861001000
Website: www.inventor.ac

Name (in print): Georgia Lazaridou
Title: Product Director



DEHUMIDIFIERS

WiFi FUNCTION



Scan here to download the latest version of this manual.
Σαρώστε εδώ για να κατεβάσετε την τελευταία έκδοση του εγχειριδίου.

v 1.1

